

For Research Use Only

CRHR1 Recombinant monoclonal antibody

Catalog Number: 87114-1-RR



Basic Information

Catalog Number: 87114-1-RR	GenBank Accession Number: NM_004382	Purification Method: Protein A purification
Size: 100ul , Concentration: 1000 µg/ml by Nanodrop;	GeneID (NCBI): 1394	CloneNo.: 251134H2
Source: Rabbit	UNIPROT ID: P34998	Recommended Dilutions: WB: 1:5000-1:50000
Isotype: IgG	Full Name: corticotropin releasing hormone receptor 1	
	Calculated MW: 48 kDa	
	Observed MW: 68 kDa	

Applications

Tested Applications: WB, ELISA	Positive Controls: WB : HeLa cells, SH-SY5Y cells, Y79 cells, HT-29 cells, rat brain tissue, mouse brain tissue, mouse liver tissue
Species Specificity: human, mouse, rat	

Background Information

Corticotropin-releasing hormone (CRH, also known as Corticotropin-releasing factor, CRF) is a 41 amino acid peptide hormone and a key regulator of the stress response. CRH and the related urocortin peptides (UCN, UCN2 and UCN3) mediate their actions through two mammalian receptor subtypes, CRHR1 and CRHR2 (PMID: 23863939). CRHR1 (also known as CRFR1) exhibits high affinity towards CRH and UCN but low affinity towards UCN2 and no affinity towards UCN3 (PMID: 22684850). The activity of this receptor is mediated by G proteins which activate adenylyl cyclase. Widely distributed throughout the brain, CRHR1 critically controls behavioral adaptation to stress and is causally linked to emotional disorders (PMID: 21885734). Alternative splicing results in multiple transcript variants encoding distinct isoforms of CRHR1. This antibody raised against a synthesized peptide corresponding to amino acid residues 148-165 of isoform CRF-R1 can only recognize isoform CRF-R1.

Storage

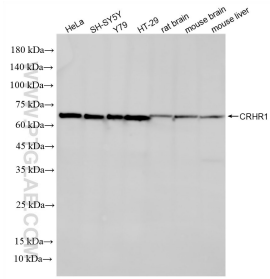
Storage:
Store at -20°C. Stable for one year after shipment.
Storage Buffer:
PBS with 0.02% sodium azide and 50% glycerol, pH7.3
Aliquoting is unnecessary for -20°C storage

*** 20ul sizes contain 0.1% BSA

For technical support and original validation data for this product please contact:
T: 1 (888) 4PTGLAB (1-888-478-4522) (toll free in USA), or 1(312) 455-8498 (outside USA)
E: proteintech@ptglab.com
W: ptglab.com

This product is exclusively available under Proteintech Group brand and is not available to purchase from any other manufacturer.

Selected Validation Data



Various lysates were subjected to SDS PAGE followed by western blot with 87114-1-RR (CRHR1 antibody) at dilution of 1:10000 incubated at room temperature for 1.5 hours.