

For Research Use Only

IL17RC Recombinant monoclonal antibody, PBS Only (Detector)

Catalog Number: 87116-2-PBS



Basic Information

Catalog Number: 87116-2-PBS	GenBank Accession Number: N/A	Purification Method: Protein A purification
Size: 100ug , Concentration: 1 mg/ml by Nanodrop;	GeneID (NCBI): 84818	CloneNo.: 250674H8
Source: Rabbit	UNIPROT ID: NP_703190.1	
Isotype: IgG	Full Name: interleukin 17 receptor C	
Immunogen Catalog Number: EG2835	Calculated MW: 79 kDa	

Applications

Tested Applications:
Sandwich ELISA, Indirect ELISA

Species Specificity:
human

Product Information

87116-2-PBS targets IL17RC as part of a matched antibody pair:

MP02890-1: 87116-3-PBS capture and 87116-2-PBS detection (validated in Sandwich ELISA)

Unconjugated rabbit recombinant monoclonal antibody in PBS only (BSA and azide free) storage buffer at a concentration of 1 mg/mL, ready for conjugation. Created using Proteintech's proprietary in-house recombinant technology. Recombinant production enables unrivalled batch-to-batch consistency, easy scale-up, and future security of supply.

This conjugation ready format makes antibodies ideal for use in many applications including: ELISAs, multiplex assays requiring matched pairs, mass cytometry, and multiplex imaging applications. Antibody use should be optimized by the end user for each application and assay.

Storage

Storage:
Store at -80°C.

Storage Buffer:
PBS only, pH7.3

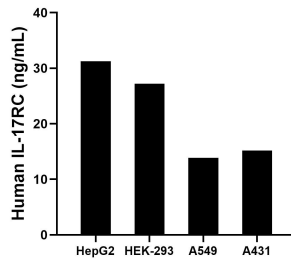
For technical support and original validation data for this product please contact:

T: 1 (888) 4PTGLAB (1-888-478-4522) (toll free in USA), or 1(312) 455-8498 (outside USA)

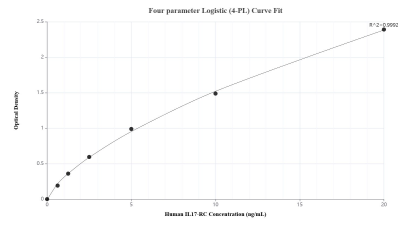
E: proteintech@ptglab.com
W: ptglab.com

This product is exclusively available under Proteintech Group brand and is not available to purchase from any other manufacturer.

Selected Validation Data



The mean IL-17RC concentration was determined to be 31.26 ng/mL in HepG2 cell extract based on a 1.20 mg/mL extract load, 27.24 ng/mL in HEK-293 cell extract based on a 1.20 mg/mL extract load, 13.84 ng/mL in A549 cell extract based on a 1.10 mg/mL extract load and 15.16 ng/mL in A431 cell extract based on a 1.20 mg/mL extract load.



Sandwich ELISA standard curve of MP02890-1, Human IL-17RC Recombinant Matched Antibody Pair - PBS only. 87116-3-PBS was coated to a plate as the capture antibody and incubated with serial dilutions of standard Eg2835. 87116-2-PBS was HRP conjugated as the detection antibody. Range: 0.625-20 ng/mL.