

For Research Use Only

p107 Recombinant monoclonal antibody, PBS Only

Catalog Number:87119-3-PBS



Basic Information

Catalog Number:

87119-3-PBS

Size:

100ug, Concentration: 1 mg/ml by Nanodrop;

Source:

Rabbit

Isotype:

IgG

Immunogen Catalog Number:

AG4146

GenBank Accession Number:

BC032247

GeneID (NCBI):

5933

UNIPROT ID:

P28749

Full Name:

retinoblastoma-like 1 (p107)

Calculated MW:

1068 aa, 119 kDa

Observed MW:

119 kDa

Purification Method:

Protein A purification

CloneNo.:

252269F11

Applications

Tested Applications:

WB, IP, Indirect ELISA

Species Specificity:

human, mouse, rat

Background Information

Retinoblastoma-like protein 1, also named RBL1, p107, is a member of E1A-binding proteins, which contains a A/B pocket, or pRb. Via this structure, RBL1 can bind to viral oncoproteins and other proteins containing LXCXE motif. It regulates cell proliferation via phosphorylation-sensitive interactions with E2F transcription factors and other proteins. Key regulator of entry into cell division. Directly involved in heterochromatin formation by maintaining overall chromatin structure and, in particular, that of constitutive heterochromatin by stabilizing histone methylation. Recruits and targets histone methyltransferases SUV420H1 and SUV420H2, leading to epigenetic transcriptional repression.(uniprot). It has been reported there are two transcripts variants of RBL1, which encode a 119-kd protein and a 68-kd protein(PMID:7490090).

Storage

Storage:

Store at -80°C.

Storage Buffer:

PBS only, pH7.3

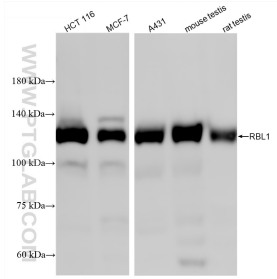
For technical support and original validation data for this product please contact:

T: 1 (888) 4PTGLAB (1-888-478-4522) (toll free in USA), or 1(312) 455-8498 (outside USA)

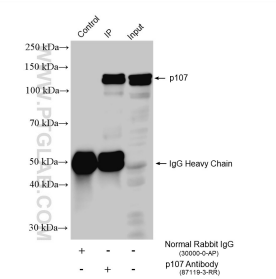
E: proteintech@ptglab.com
W: ptglab.com

This product is exclusively available under Proteintech Group brand and is not available to purchase from any other manufacturer.

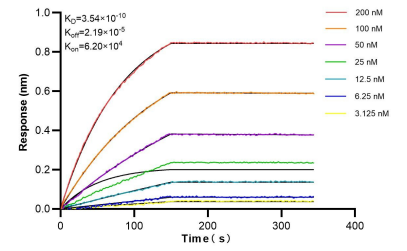
Selected Validation Data



Various lysates were subjected to SDS PAGE followed by western blot with 87119-3-RR (RBL1 antibody) at dilution of 1:2000 incubated at room temperature for 1.5 hours. This data was developed using the same antibody clone with 87119-3-PBS in a different storage buffer formulation.



IP result of anti-p107 (IP:87119-3-RR, 4ug; Detection:87119-3-RR 1:600) with MCF-7 cells lysate 1120 ug. This data was developed using the same antibody clone with 87119-3-PBS in a different storage buffer formulation.



Bilayer interferometry (BLI) kinetic assays of 87119-3-RR against Human p107 were performed. The affinity constant is 0.354 nM.