

For Research Use Only

p107 Recombinant monoclonal antibody

Catalog Number:87119-3-RR



Basic Information

| | | |
|--|---|---|
| Catalog Number: 87119-3-RR | GenBank Accession Number: BC032247 | Purification Method: Protein A purification |
| Size: 100ul , Concentration: 1000 µg/ml by Nanodrop; | GeneID (NCBI): 5933 | CloneNo.: 252269F11 |
| Source: Rabbit | UNIPROT ID: P28749 | Recommended Dilutions: WB: 1:1000-1:4000 IP: 0.5-4.0 ug for 1.0-3.0 mg of total protein lysate |
| Isotype: IgG | Full Name: retinoblastoma-like 1 (p107) | |
| Immunogen Catalog Number: AG4146 | Calculated MW: 1068 aa, 119 kDa | |
| | Observed MW: 119 kDa | |

Applications

| | |
|--|--|
| Tested Applications: WB, IP, ELISA | Positive Controls: WB : HCT 116 cells, MCF-7 cells, A431 cells, mouse testis tissue, rat testis tissue |
| Species Specificity: human, mouse, rat | IP : MCF-7 cells, |

Background Information

Retinoblastoma-like protein 1, also named RBL1, p107, is a member of E1A-binding proteins, which contains a A/B pocket, or pRb. Via this structure, RBL1 can bind to viral oncoproteins and other proteins containing LXCXE motif. It regulates cell proliferation via phosphorylation-sensitive interactions with E2F transcription factors and other proteins. Key regulator of entry into cell division. Directly involved in heterochromatin formation by maintaining overall chromatin structure and, in particular, that of constitutive heterochromatin by stabilizing histone methylation. Recruits and targets histone methyltransferases SUV420H1 and SUV420H2, leading to epigenetic transcriptional repression.(uniprot). It has been reported there are two transcripts variants of RBL1, which encode a 119-kd protein and a 68-kd protein(PMID:7490090).

Storage

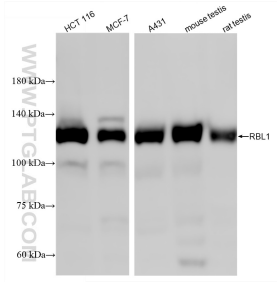
Storage:
Store at -20°C. Stable for one year after shipment.
Storage Buffer:
PBS with 0.02% sodium azide and 50% glycerol, pH7.3
Aliquoting is unnecessary for -20°C storage

*** 20ul sizes contain 0.1% BSA

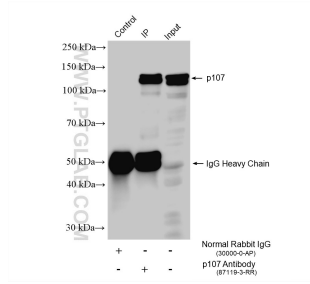
For technical support and original validation data for this product please contact:
T: 1 (888) 4PTGLAB (1-888-478-4522) (toll free in USA), or 1(312) 455-8498 (outside USA)
E: proteintech@ptglab.com
W: ptglab.com

This product is exclusively available under Proteintech Group brand and is not available to purchase from any other manufacturer.

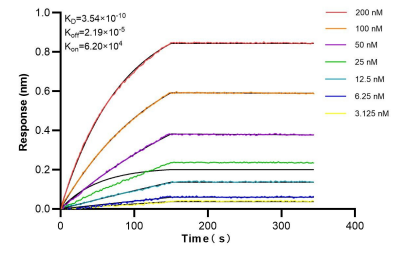
Selected Validation Data



Various lysates were subjected to SDS PAGE followed by western blot with 87119-3-RR (RBL1 antibody) at dilution of 1:2000 incubated at room temperature for 1.5 hours.



IP result of anti-p107 (IP:87119-3-RR, 4 μ g; Detection:87119-3-RR 1:600) with MCF-7 cells lysate 1120 μ g.



Bi-layer interferometry (BLI) kinetic assays of 87119-3-RR against Human p107 were performed. The affinity constant is 0.354 nM.