

For Research Use Only

GIPR Recombinant monoclonal antibody, PBS Only

Catalog Number: 87123-1-PBS



Basic Information

Catalog Number: 87123-1-PBS	GenBank Accession Number: NM_000164.3	Purification Method: Protein A purification
Size: 100ug, Concentration: 1 mg/ml by Nanodrop;	GeneID (NCBI): 2696	CloneNo.: 252192B7
Source: Rabbit	UNIPROT ID: P48546	
Isotype: IgG	Full Name: gastric inhibitory polypeptide receptor	
Immunogen Catalog Number: EG6484	Calculated MW: 53 kDa	
	Observed MW: 53 kDa	

Applications

Tested Applications:
WB, Indirect ELISA

Species Specificity:
human, rat

Background Information

GIPR, or Gastric Inhibitory Polypeptide Receptor, plays a crucial role in glucose metabolism and insulin secretion. It is a G protein-coupled receptor (GPCR). It belongs to the B1 class of this receptor family, which is involved in various physiological processes including fat generation, pancreatic beta-cell proliferation, and insulin release.

Storage

Storage:
Store at -80°C.

Storage Buffer:
PBS only, pH7.3

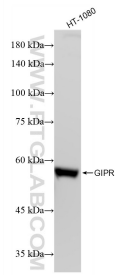
For technical support and original validation data for this product please contact:

T: 1 (888) 4PTGLAB (1-888-478-4522) (toll free in USA), or 1(312) 455-8498 (outside USA)

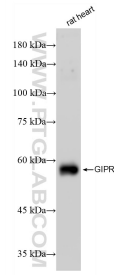
E: proteintech@ptglab.com
W: ptglab.com

This product is exclusively available under Proteintech Group brand and is not available to purchase from any other manufacturer.

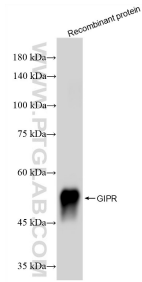
Selected Validation Data



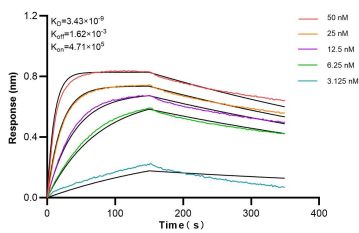
HT-1080 cells lysates were subjected to SDS PAGE followed by western blot with 87123-1-RR (GIPR antibody) at dilution of 1:2000 incubated at room temperature for 1.5 hours. This data was developed using the same antibody clone with 87123-1-PBS in a different storage buffer formulation.



rat heart tissue lysates were subjected to SDS PAGE followed by western blot with 87123-1-RR (GIPR antibody) at dilution of 1:2000 incubated at room temperature for 1.5 hours. This data was developed using the same antibody clone with 87123-1-PBS in a different storage buffer formulation.



Various lysates were subjected to SDS PAGE followed by western blot with 87123-1-RR (GIPR antibody) at dilution of 1:2000 incubated at room temperature for 1.5 hours. This data was developed using the same antibody clone with 87123-1-PBS in a different storage buffer formulation.



Biolayer interferometry (BLI) kinetic assays of 87123-1-RR against Human GIPR were performed. The affinity constant is 3.43 nM.