

For Research Use Only

GIPR Recombinant monoclonal antibody

Catalog Number: 87123-1-RR



Basic Information

| | | |
|--|--|---|
| Catalog Number: 87123-1-RR | GenBank Accession Number: NM_000164.3 | Purification Method: Protein A purification |
| Size: 100ul , Concentration: 1000 µg/ml by Nanodrop; | GeneID (NCBI): 2696 | CloneNo.: 252192B7 |
| Source: Rabbit | UNIPROT ID: P48546 | Recommended Dilutions: WB: 1:1000-1:4000 |
| Isotype: IgG | Full Name: gastric inhibitory polypeptide receptor | |
| Immunogen Catalog Number: EG6484 | Calculated MW: 53 kDa | |
| | Observed MW: 53 kDa | |

Applications

| | |
|---|--|
| Tested Applications: WB, ELISA | Positive Controls: WB : HT-1080 cells, rat heart tissue, Recombinant protein |
| Species Specificity: human, rat | |

Background Information

GIPR, or Gastric Inhibitory Polypeptide Receptor, plays a crucial role in glucose metabolism and insulin secretion. It is a G protein-coupled receptor (GPCR). It belongs to the B1 class of this receptor family, which is involved in various physiological processes including fat generation, pancreatic beta-cell proliferation, and insulin release.

Storage

Storage:
Store at -20°C. Stable for one year after shipment.
Storage Buffer:
PBS with 0.02% sodium azide and 50% glycerol, pH7.3
Aliquoting is unnecessary for -20°C storage

*** 20ul sizes contain 0.1% BSA

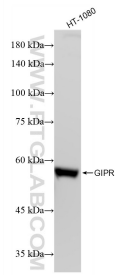
For technical support and original validation data for this product please contact:

T: 1 (888) 4PTGLAB (1-888-478-4522) (toll free in USA), or 1(312) 455-8498 (outside USA)

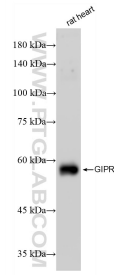
E: proteintech@ptglab.com
W: ptglab.com

This product is exclusively available under Proteintech Group brand and is not available to purchase from any other manufacturer.

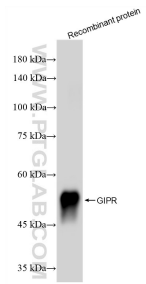
Selected Validation Data



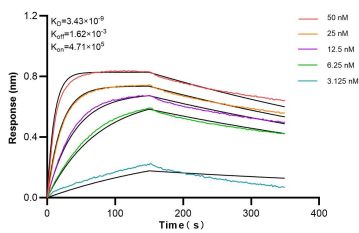
HT-1080 cells lysates were subjected to SDS PAGE followed by western blot with 87123-1-RR (GIPR antibody) at dilution of 1:2000 incubated at room temperature for 1.5 hours.



rat heart tissue lysates were subjected to SDS PAGE followed by western blot with 87123-1-RR (GIPR antibody) at dilution of 1:2000 incubated at room temperature for 1.5 hours.



Various lysates were subjected to SDS PAGE followed by western blot with 87123-1-RR (GIPR antibody) at dilution of 1:2000 incubated at room temperature for 1.5 hours.



Biolayer interferometry (BLI) kinetic assays of 87123-1-RR against Human GIPR were performed. The affinity constant is 3.43 nM.