

For Research Use Only

MTFR1 Recombinant monoclonal antibody, PBS Only

Catalog Number: 87130-1-PBS



Basic Information

Catalog Number: 87130-1-PBS	GenBank Accession Number: BC036116	Purification Method: Protein A purification
Size: 100ug, Concentration: 1 mg/ml by Nanodrop;	GeneID (NCBI): 9650	CloneNo.: 252234C10
Source: Rabbit	UNIPROT ID: Q15390	
Isotype: IgG	Full Name: mitochondrial fission regulator 1	
Immunogen Catalog Number: AG10857	Calculated MW: 333 aa, 37 kDa	
	Observed MW: 37 kDa	

Applications

Tested Applications:
WB, IF/ICC, Indirect ELISA

Species Specificity:
human

Background Information

MTFR1, also known as CHPPR, is a mitochondria protein. It may play a role in mitochondrial aerobic respiration. It may also regulate mitochondrial organization and fission.

Storage

Storage:
Store at -80°C.

Storage Buffer:
PBS only, pH7.3

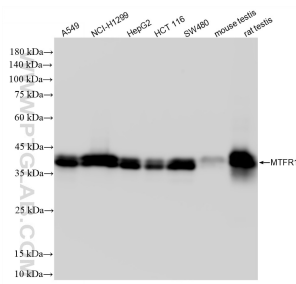
For technical support and original validation data for this product please contact:

T: 1 (888) 4PTGLAB (1-888-478-4522) (toll free in USA), or 1(312) 455-8498 (outside USA)

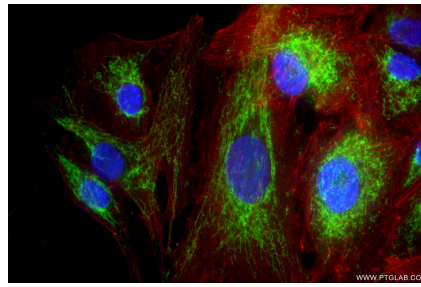
E: proteintech@ptglab.com
W: ptglab.com

This product is exclusively available under Proteintech Group brand and is not available to purchase from any other manufacturer.

Selected Validation Data



Various lysates were subjected to SDS PAGE followed by western blot with 87130-1-RR (MTFR1 antibody) at dilution of 1:10000 incubated at room temperature for 1.5 hours. This data was developed using the same antibody clone with 87130-1-PBS in a different storage buffer formulation.



Immunofluorescent analysis of (4% PFA) fixed A549 cells using MTFR1 antibody (87130-1-RR, Clone: 252234C10) at dilution of 1:500 and CoraLite® 488-Conjugated Goat Anti-Rabbit IgG(H+L) (SA00013-2), CL594-Phalloidin (red). This data was developed using the same antibody clone with 87130-1-PBS in a different storage buffer formulation.