

For Research Use Only

GPM6A Recombinant monoclonal antibody

Catalog Number: 87139-1-RR



Basic Information

Catalog Number: 87139-1-RR	GenBank Accession Number: BC022528	Purification Method: Protein A purification
Size: 100ul , Concentration: 1000 µg/ml by Nanodrop;	GeneID (NCBI): 2823	CloneNo.: 252427E12
Source: Rabbit	UNIPROT ID: P51674	Recommended Dilutions: WB: 1:5000-1:50000 IP: 0.5-4.0 ug for 1.0-3.0 mg of total protein lysate
Isotype: IgG	Full Name: glycoprotein M6A	
Immunogen Catalog Number: AG6915	Calculated MW: 31 kDa	
	Observed MW: 31 kDa	

Applications

Tested Applications: WB, IP, ELISA	Positive Controls: WB : mouse brain tissue, rat brain tissue IP : mouse brain tissue,
Species Specificity: human, mouse, rat	

Background Information

Glycoprotein M6A (GPM6A, or M6A) is known as a multi-pass transmembrane protein and an abundant cell surface protein on neurons in the central nervous system (CNS). M6A belongs to the myelin proteolipid protein family and is involved in neuronal differentiation, including differentiation and migration of neuronal stem cell. M6A is identified as a retinal membrane protein that is strongly expressed at embryonic stages. In mouse adult retina, M6A plays a role in neuronal plasticity and is involved in neurite and filopodia outgrowth, filopodia motility and probably synapse formation via regulation of MAPK and Src signaling pathways.

Storage

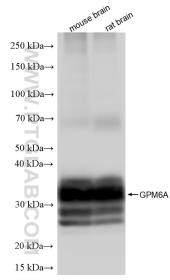
Storage:
Store at -20°C. Stable for one year after shipment.
Storage Buffer:
PBS with 0.02% sodium azide and 50% glycerol, pH7.3
Aliquoting is unnecessary for -20°C storage

*** 20ul sizes contain 0.1% BSA

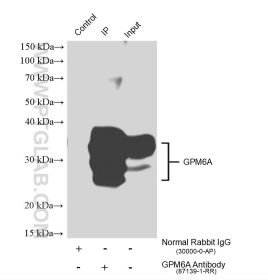
For technical support and original validation data for this product please contact:
T: 1 (888) 4PTGLAB (1-888-478-4522) (toll free in USA), or 1(312) 455-8498 (outside USA)
E: proteintech@ptglab.com
W: ptglab.com

This product is exclusively available under Proteintech Group brand and is not available to purchase from any other manufacturer.

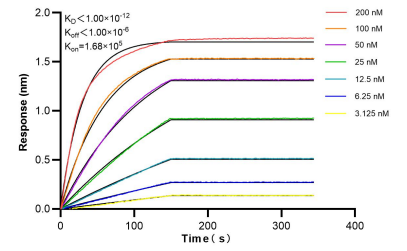
Selected Validation Data



Various lysates were subjected to SDS PAGE followed by western blot with 87139-1-RR (GPM6A antibody) at dilution of 1:20000 incubated at room temperature for 1.5 hours.



IP result of anti-GPM6A (IP:87139-1-RR, 4ug; Detection:87139-1-RR 1:5000) with mouse brain tissue lysate 1680 ug.



Bi-layer interferometry (BLI) kinetic assays of 87139-1-RR against Human GPM6A were performed. The affinity constant is below 1 pM.