

For Research Use Only

CLEC2L Recombinant monoclonal antibody

Catalog Number: 87144-1-RR



Basic Information

Catalog Number: 87144-1-RR	GenBank Accession Number: NM_001080511.2	Purification Method: Protein A purification
Size: 100ul , Concentration: 1000 µg/ml by Nanodrop;	GeneID (NCBI): 154790	CloneNo.: 252317D2
Source: Rabbit	UNIPROT ID: POC7M8	Recommended Dilutions: WB: 1:5000-1:50000
Isotype: IgG	Full Name: C-type lectin domain family 2, member L	
Immunogen Catalog Number: AG35450	Calculated MW: 24 kDa	
	Observed MW: 24 kDa	

Applications

Tested Applications:

WB, ELISA

Species Specificity:

human, mouse, rat, pig

Positive Controls:

WB : mouse cerebellum tissue, rat cerebellum tissue, mouse brain tissue, rat brain tissue, pig cerebellum tissue

Background Information

C-type lectin domain family 2 member L (CLEC2L) is a membrane protein mainly expressed in brain tissue and probably has carbohydrate-binding activity. The CLEC2L-encoded C-type lectin-like receptors (CTLRs) are expressed as non-glycosylated, disulfide-linked homodimers at the cell surface, and designated as BA CL (brain-associated C-type lectin) (PMID: 23776472). The CLEC2L protein has 214 amino acids with a predicted molecular mass of 23.9 kDa. Under non-reducing conditions, FLAG-tagged CLEC2L proteins appeared with a molecular mass of ~55 kDa in immunoblots because of the occurrence of disulfide-linked homodimers (PMID: 23776472).

Storage

Storage:

Store at -20°C. Stable for one year after shipment.

Storage Buffer:

PBS with 0.02% sodium azide and 50% glycerol, pH7.3

Aliquoting is unnecessary for -20°C storage

*** 20ul sizes contain 0.1% BSA

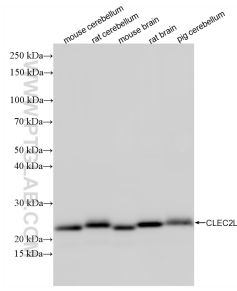
For technical support and original validation data for this product please contact:

T: 1 (888) 4PTGLAB (1-888-478-4522) (toll free in USA), or 1(312) 455-8498 (outside USA)

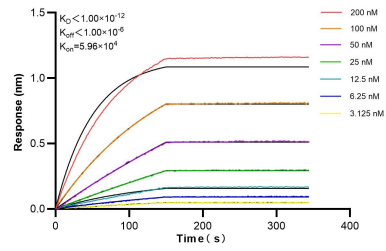
E: proteintech@ptglab.com
W: ptglab.com

This product is exclusively available under Proteintech Group brand and is not available to purchase from any other manufacturer.

Selected Validation Data



Various lysates were subjected to SDS PAGE followed by western blot with 87144-1-RR (CLEC2L antibody) at dilution of 1:20000 incubated at room temperature for 1.5 hours.



Biolayer interferometry (BLI) kinetic assays of 87144-1-RR against Human CLEC2L were performed. The affinity constant is below 1 pM.