

For Research Use Only

MUM1 Recombinant monoclonal antibody

Catalog Number: 87147-1-RR



Basic Information

Catalog Number: 87147-1-RR	GenBank Accession Number: BC008098	Purification Method: Protein A purification
Size: 100ul , Concentration: 1000 µg/ml by Nanodrop;	GeneID (NCBI): 84939	CloneNo.: 252371H1
Source: Rabbit	UNIPROT ID: Q2TAK8	Recommended Dilutions: WB: 1:2000-1:10000
Isotype: IgG	Full Name: melanoma associated antigen (mutated) 1	
Immunogen Catalog Number: AG3371	Calculated MW: 18 kDa, 79 kDa	
	Observed MW: 80 kDa	

Applications

Tested Applications: WB, ELISA	Positive Controls: WB : HEK-293 cells, Jurkat cells, HT-1080 cells, A375 cells, HT-29 cells, HCT 116 cells, fetal human brain tissue
Species Specificity: human	

Background Information

MUM1, also named as EXPAND1, is an architectural component of the chromatin, which in response to DNA damage serves as an accessory factor to promote cell survival. It is a 53BP1-associated DNA damage-responsive factor. MUM1/EXPAND1 is different to another protein IRF4/MUM1.

Storage

Storage:
Store at -20°C. Stable for one year after shipment.
Storage Buffer:
PBS with 0.02% sodium azide and 50% glycerol, pH7.3
Aliquoting is unnecessary for -20°C storage

*** 20ul sizes contain 0.1% BSA

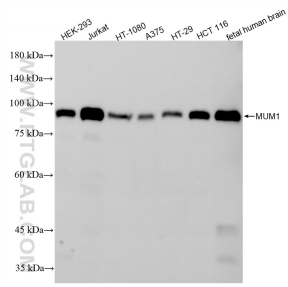
For technical support and original validation data for this product please contact:

T: 1 (888) 4PTGLAB (1-888-478-4522) (toll free in USA), or 1(312) 455-8498 (outside USA)

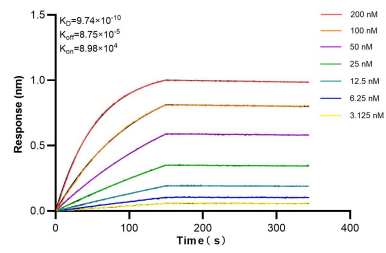
E: proteintech@ptglab.com
W: ptglab.com

This product is exclusively available under Proteintech Group brand and is not available to purchase from any other manufacturer.

Selected Validation Data



Various lysates were subjected to SDS PAGE followed by western blot with 87147-1-RR (MUM1 antibody) at dilution of 1:5000 incubated at room temperature for 1.5 hours.



Biolayer interferometry (BLI) kinetic assays of 87147-1-RR against Human MUM1 were performed. The affinity constant is 0.974 nM.