

For Research Use Only

VTI1B Recombinant monoclonal antibody, PBS Only

Catalog Number: 87150-1-PBS



Basic Information

Catalog Number: 87150-1-PBS	GenBank Accession Number: BC003142	Purification Method: Protein A purification
Size: 100ug , Concentration: 1 mg/ml by Nanodrop;	GeneID (NCBI): 10490	CloneNo.: 252349D1
Source: Rabbit	UNIPROT ID: Q9UEU0	
Isotype: IgG	Full Name: vesicle transport through interaction with t-SNAREs homolog 1B (yeast)	
Immunogen Catalog Number: AG5906	Calculated MW: 27 kDa	
	Observed MW: 29 kDa	

Applications

Tested Applications:
WB, IP, Indirect ELISA

Species Specificity:
human, mouse, rat

Background Information

Fusion between membranes is mediated by specific SNARE (soluble N-ethylmaleimide-sensitive factor attachment protein receptor) complexes. Two human SNARE proteins, VTI1A and VTI1B, are homologous to the yeast Q-SNARE Vti1p, which is part of several SNARE complexes in different transport steps (PMID: 12067063). Both proteins had a distinct but overlapping localization. VTI1A is localized predominantly in the TGN, VTI1B in late endosomes (PMID:12067063; 21262811). VTI1B forms a SNARE complex with STX7, STX8, and VAMP8, which functions in the homotypic fusion of late endosomes. It is a component of the SNARE complex composed of STX7, STX8, VAMP7, and VIT1B that is required for heterotypic fusion of late endosomes with lysosomes. It has also been reported that VIT1B interacts with EpsinR, a protein involved in exocytic trafficking (PMID: 15371541).

Storage

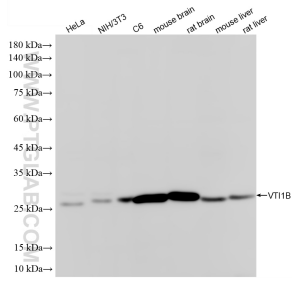
Storage:
Store at -80°C.

Storage Buffer:
PBS only, pH7.3

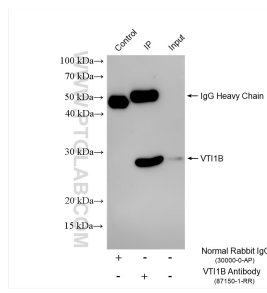
For technical support and original validation data for this product please contact:
T: 1 (888) 4PTGLAB (1-888-478-4522) (toll free in USA), or 1(312) 455-8498 (outside USA) E: proteintech@ptglab.com
W: ptglab.com

This product is exclusively available under Proteintech Group brand and is not available to purchase from any other manufacturer.

Selected Validation Data



HeLa cells were subjected to SDS PAGE followed by western blot with 87150-1-RR (VTI1B antibody) at dilution of 1:2000 incubated at room temperature for 1.5 hours. This data was developed using the same antibody clone with 87150-1-PBS in a different storage buffer formulation.



IP result of anti-VTI1B (IP:87150-1-RR, 4ug; Detection:87150-1-RR 1:800) with HeLa cells lysate 1320 ug. This data was developed using the same antibody clone with 87150-1-PBS in a different storage buffer formulation.