

For Research Use Only

CHMP2B Recombinant monoclonal antibody

Catalog Number: 87151-1-RR



Basic Information

Catalog Number: 87151-1-RR	GenBank Accession Number: BC001553	Purification Method: Protein A purification
Size: 100ul , Concentration: 1000 µg/ml by Nanodrop;	GeneID (NCBI): 25978	CloneNo.: 252352F2
Source: Rabbit	UNIPROT ID: Q9UQN3	Recommended Dilutions: WB: 1:5000-1:50000 IF/ICC: 1:250-1:1000
Isotype: IgG	Full Name: chromatin modifying protein 2B	
Immunogen Catalog Number: AG3222	Calculated MW: 24 kDa	
	Observed MW: 30-32 kDa	

Applications

Tested Applications: WB, IF/ICC, ELISA	Positive Controls:
Species Specificity: human, mouse, rat	WB : HeLa cells, A549 cells, HEK-293T cells, MCF-7 cells, NIH/3T3 cells, mouse brain tissue, rat brain tissue
	IF/ICC : NIH/3T3 cells, HeLa cells

Background Information

CHMP2B, chromatin-modifying protein 2b, also named CHMP2.5, VPS2B, and VPS2-2, belongs to the chromatin-modifying protein / charged multivesicular body protein (CHMP) family. It is a component of the endosomal sorting complex required for transport III (ESCRT-III), which is involved in endosomal and autophagic trafficking of proteins to lysosomes for degradation. Mutations of CHMP2B lead to C-terminal truncation or are replaced with mis-splicing C-termini and cause frontotemporal lobar degeneration (FTLD). In CHMP2B mutation patients, p62- and ubiquitin-positive, but TDP-43 and FUS-negative neural inclusions are formed, which may be caused by impaired lysosomal degradation through the autophagy and endosome-lysosome pathways.

Storage

Storage:
Store at -20°C. Stable for one year after shipment.
Storage Buffer:
PBS with 0.02% sodium azide and 50% glycerol, pH7.3
Aliquoting is unnecessary for -20°C storage

*** 20ul sizes contain 0.1% BSA

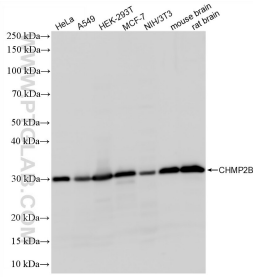
For technical support and original validation data for this product please contact:

T: 1 (888) 4PTGLAB (1-888-478-4522) (toll free in USA), or 1(312) 455-8498 (outside USA)

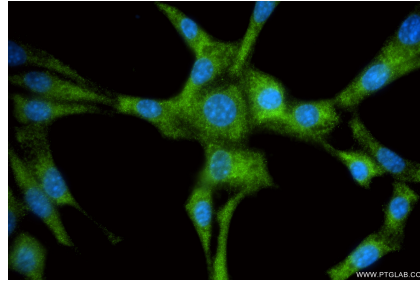
E: proteintech@ptglab.com
W: ptglab.com

This product is exclusively available under Proteintech Group brand and is not available to purchase from any other manufacturer.

Selected Validation Data



Various lysates were subjected to SDS PAGE followed by western blot with 87151-1-RR (CHMP2B antibody) at dilution of 1:20000 incubated at room temperature for 1.5 hours.



Immunofluorescent analysis of (-20°C Ethanol) fixed NIH/3T3 cells using CHMP2B antibody (87151-1-RR, Clone: 252352F2) at dilution of 1:500 and CoraLite® 488-Conjugated Goat Anti-Rabbit IgG(H+L) (SA00013-2).