

For Research Use Only

# CHMP2B Recombinant monoclonal antibody, PBS Only (Detector)

Catalog Number: 87151-2-PBS



## Basic Information

<b>Catalog Number:</b> 87151-2-PBS	<b>GenBank Accession Number:</b> BC001553	<b>Purification Method:</b> Protein A purification
<b>Size:</b> 100ug, Concentration: 1 mg/ml by Nanodrop;	<b>GeneID (NCBI):</b> 25978	<b>CloneNo.:</b> 252352E2
<b>Source:</b> Rabbit	<b>UNIPROT ID:</b> Q9UQN3	
<b>Isotype:</b> IgG	<b>Full Name:</b> chromatin modifying protein 2B	
<b>Immunogen Catalog Number:</b> AG3222	<b>Calculated MW:</b> 24 kDa	

## Applications

**Tested Applications:**  
Sandwich ELISA, Indirect ELISA

**Species Specificity:**  
human

## Product Information

87151-2-PBS targets CHMP2B as part of a matched antibody pair:

MP02936-1: 87151-3-PBS capture and 87151-2-PBS detection (validated in Sandwich ELISA)

Unconjugated rabbit recombinant monoclonal antibody in PBS only (BSA and azide free) storage buffer at a concentration of 1 mg/mL, ready for conjugation. Created using Proteintech's proprietary in-house recombinant technology. Recombinant production enables unrivalled batch-to-batch consistency, easy scale-up, and future security of supply.

This conjugation ready format makes antibodies ideal for use in many applications including: ELISAs, multiplex assays requiring matched pairs, mass cytometry, and multiplex imaging applications. Antibody use should be optimized by the end user for each application and assay.

## Storage

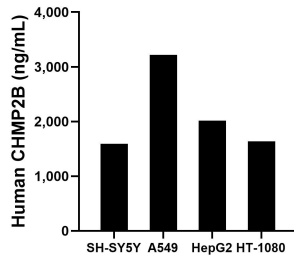
**Storage:**  
Store at -80°C.

**Storage Buffer:**  
PBS only, pH7.3

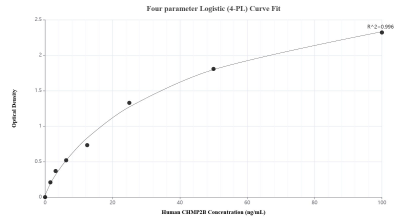
For technical support and original validation data for this product please contact:  
T: 1 (888) 4PTGLAB (1-888-478-4522) (toll free in USA), or 1(312) 455-8498 (outside USA)      E: proteintech@ptglab.com  
W: ptglab.com

**This product is exclusively available under Proteintech Group brand and is not available to purchase from any other manufacturer.**

## Selected Validation Data



The mean CHMP2B concentration was determined to be 1,591.69 ng/mL in SH-SY5Y cell extract based on a 1.20 mg/mL extract load, 3,218.99 ng/mL in A549 cell extract based on a 1.20 mg/mL extract load, 2,013.37 ng/mL in HepG2 cell extract based on a 1.20 mg/mL extract load and 1,636.28 ng/mL in HT-1080 cell extract based on a 1.20 mg/mL extract load.



Sandwich ELISA standard curve of MP02936-1, Human CHMP2B Recombinant Matched Antibody Pair - PBS only. 87151-3-PBS was coated to a plate as the capture antibody and incubated with serial dilutions of standard Ag3222. 87151-2-PBS was HRP conjugated as the detection antibody. Range: 1.56-100 ng/mL