

For Research Use Only

# PDE1A Recombinant monoclonal antibody, PBS Only

Catalog Number: 87154-1-PBS



## Basic Information

<b>Catalog Number:</b> 87154-1-PBS	<b>GenBank Accession Number:</b> BC022480	<b>Purification Method:</b> Protein A purification
<b>Size:</b> 100ug, Concentration: 1 mg/ml by Nanodrop;	<b>GeneID (NCBI):</b> 5136	<b>CloneNo.:</b> 252285B6
<b>Source:</b> Rabbit	<b>UNIPROT ID:</b> P54750	
<b>Isotype:</b> IgG	<b>Full Name:</b> phosphodiesterase 1A, calmodulin-dependent	
<b>Immunogen Catalog Number:</b> AG3157	<b>Calculated MW:</b> 545 aa, 61 kDa	
	<b>Observed MW:</b> 61 kDa	

## Applications

**Tested Applications:**  
WB, Indirect ELISA

**Species Specificity:**  
human, mouse, rat

## Background Information

PDE1A (Calcium/calmodulin-dependent 3',5'-cyclic nucleotide phosphodiesterase 1A) is also named as Cam-PDE 1A, 61 kDa Cam-PDE, hCam-1 and belongs to the cyclic nucleotide phosphodiesterase (PDEs) family. The PDEs play a role in signal transduction by regulating intracellular cyclic nucleotide concentrations through hydrolysis of cAMP and/or cGMP to their respective nucleoside 5-prime monophosphates. This protein has 9 isoforms produced by alternative splicing with the molecular weight from 57 kDa to 63 kDa. There is a report showing the major 67-kD PDE1A isoform identified in human sperm associates tightly with calmodulin and is not activated by Ca(2+)/calmodulin (PMID:12135876).

## Storage

**Storage:**  
Store at -80°C.

**Storage Buffer:**  
PBS only, pH7.3

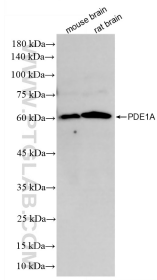
For technical support and original validation data for this product please contact:

T: 1 (888) 4PTGLAB (1-888-478-4522) (toll free in USA), or 1(312) 455-8498 (outside USA)

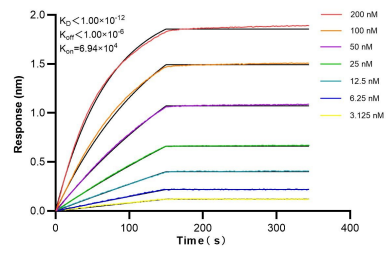
E: [proteintech@ptglab.com](mailto:proteintech@ptglab.com)  
W: [ptglab.com](http://ptglab.com)

**This product is exclusively available under Proteintech Group brand and is not available to purchase from any other manufacturer.**

## Selected Validation Data



Various lysates were subjected to SDS PAGE followed by western blot with 87154-1-RR (PDE1A antibody) at dilution of 1:4000 incubated at room temperature for 1.5 hours. This data was developed using the same antibody clone with 87154-1-PBS in a different storage buffer formulation.



Biolayer interferometry (BLI) kinetic assays of 87154-1-RR against Human PDE1A were performed. The affinity constant is below 1 pM.