

For Research Use Only

ATP6V1F Recombinant monoclonal antibody

Catalog Number: 87157-1-RR



Basic Information

Catalog Number: 87157-1-RR	GenBank Accession Number: BC107854	Purification Method: Protein A purification
Size: 100ul , Concentration: 1000 ug/ml by Nanodrop;	GeneID (NCBI): 9296	CloneNo.: 252263C1
Source: Rabbit	UNIPROT ID: Q16864	Recommended Dilutions: WB: 1:500-1:2000 IHC: 1:500-1:2000
Isotype: IgG	Full Name: ATPase, H ⁺ transporting, lysosomal 14kDa, V1 subunit F	
Immunogen Catalog Number: AG12121	Calculated MW: 119 aa, 13 kDa	
	Observed MW: 14 kDa	

Applications

Tested Applications:

WB, IHC, ELISA

Species Specificity:

human, mouse, rat

Note-IHC: suggested antigen retrieval with TE buffer pH 9.0; (*) Alternatively, antigen retrieval may be performed with citrate buffer pH 6.0

Positive Controls:

WB : HepG2 cells, HeLa cells, A549 cells, Jurkat cells, MCF-7 cells, mouse kidney tissue, rat kidney tissue

IHC : human kidney tissue,

Background Information

ATP6V1F(V-type proton ATPase subunit F) is also named as ATP6S14, VATF and belongs to the V-ATPase F subunit family. It generates an electrochemical proton gradient that is acid and positive inside synaptic vesicles. ATP6V1F plays a major role as energizers of animal plasma membranes, especially apical plasma membranes of epithelial cells. This protein has 2 isoforms produced by alternative splicing with the molecular weight of 14 kDa and 16 kDa.

Storage

Storage:

Store at -20°C. Stable for one year after shipment.

Storage Buffer:

PBS with 0.02% sodium azide and 50% glycerol, pH7.3

Aliquoting is unnecessary for -20°C storage

*** 20ul sizes contain 0.1% BSA

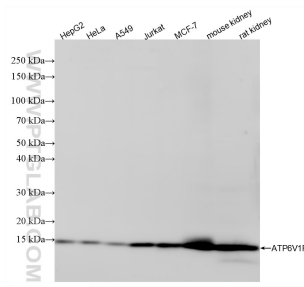
For technical support and original validation data for this product please contact:

T: 1 (888) 4PTGLAB (1-888-478-4522) (toll free in USA), or 1(312) 455-8498 (outside USA)

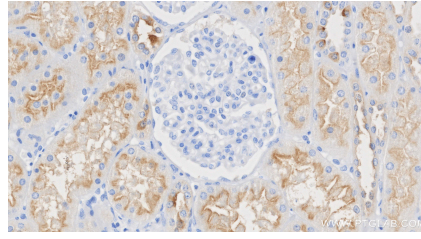
E: proteintech@ptglab.com
W: ptglab.com

This product is exclusively available under Proteintech Group brand and is not available to purchase from any other manufacturer.

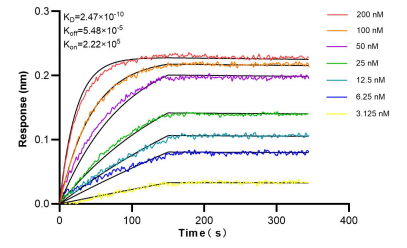
Selected Validation Data



Various lysates were subjected to SDS PAGE followed by western blot with 87157-1-RR (ATP6V1F antibody) at dilution of 1:1000 incubated at room temperature for 1.5 hours.



Immunohistochemical analysis of paraffin-embedded human kidney tissue slide using 87157-1-RR (ATP6V1F antibody) at dilution of 1:1000 (under 40x lens). Heat mediated antigen retrieval with Tris-EDTA buffer (pH 9.0).



Bi-layer interferometry (BLI) kinetic assays of 87157-1-RR against Human ATP6V1F were performed. The affinity constant is 0.247 nM.