

For Research Use Only

# INPPL1 Recombinant monoclonal antibody, PBS Only

Catalog Number: 87161-1-PBS



## Basic Information

<b>Catalog Number:</b> 87161-1-PBS	<b>GenBank Accession Number:</b> BC140853	<b>Purification Method:</b> Protein A purification
<b>Size:</b> 100ug , Concentration: 1 mg/ml by Nanodrop;	<b>GeneID (NCBI):</b> 3636	<b>CloneNo.:</b> 252293A4
<b>Source:</b> Rabbit	<b>UNIPROT ID:</b> O15357	
<b>Isotype:</b> IgG	<b>Full Name:</b> inositol polyphosphate phosphatase-like 1	
	<b>Calculated MW:</b> 1258 aa, 139 kDa	
	<b>Observed MW:</b> 150 kDa	

## Applications

**Tested Applications:**  
WB, IHC, Indirect ELISA

**Species Specificity:**  
human, mouse

## Background Information

Inositol polyphosphate phosphatase-like protein 1(INPPL1) belongs to the inositol and phosphatidylinositol 5-phosphatase family, also known as SH2 domain-containing inositol 5'-phosphatase 2(SHIP2), is ubiquitous in all organizations. SHIP2 is constitutively tyrosine-phosphorylated in chronic myeloid leukemia progenitor cells. In B cells, SHIP2 was most tyrosine phosphorylated after BCR and FC-γriib crosslinking and was associated with Shc, but not after BCR stimulation alone.

## Storage

**Storage:**  
Store at -80°C.

**Storage Buffer:**  
PBS only, pH7.3

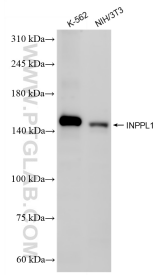
For technical support and original validation data for this product please contact:

T: 1 (888) 4PTGLAB (1-888-478-4522) (toll free in USA), or 1(312) 455-8498 (outside USA)

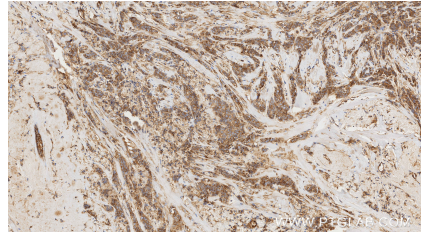
E: [proteintech@ptglab.com](mailto:proteintech@ptglab.com)  
W: [ptglab.com](http://ptglab.com)

**This product is exclusively available under Proteintech Group brand and is not available to purchase from any other manufacturer.**

## Selected Validation Data



Various lysates were subjected to SDS PAGE followed by western blot with 87161-1-RR (INPPL1 antibody) at dilution of 1:1000 incubated at room temperature for 1.5 hours. This data was developed using the same antibody clone with 87161-1-PBS in a different storage buffer formulation.



Immunohistochemical analysis of paraffin-embedded human breast cancer tissue slide using 87161-1-RR (INPPL1 antibody) at dilution of 1:1000 (under 10x lens). Heat mediated antigen retrieval with Tris-EDTA buffer (pH 9.0). This data was developed using the same antibody clone with 87161-1-PBS in a different storage buffer formulation.