

For Research Use Only

# INPPL1 Recombinant monoclonal antibody

Catalog Number: 87161-1-RR



## Basic Information

<b>Catalog Number:</b> 87161-1-RR	<b>GenBank Accession Number:</b> BC140853	<b>Purification Method:</b> Protein A purification
<b>Size:</b> 100ul , Concentration: 1000 µg/ml by Nanodrop;	<b>GeneID (NCBI):</b> 3636	<b>CloneNo.:</b> 252293A4
<b>Source:</b> Rabbit	<b>UNIPROT ID:</b> O15357	<b>Recommended Dilutions:</b> WB: 1:500-1:2000 IHC: 1:500-1:2000
<b>Isotype:</b> IgG	<b>Full Name:</b> inositol polyphosphate phosphatase-like 1	
	<b>Calculated MW:</b> 1258 aa, 139 kDa	
	<b>Observed MW:</b> 150 kDa	

## Applications

### Tested Applications:

WB, IHC, ELISA

### Species Specificity:

human, mouse

**Note-IHC: suggested antigen retrieval with TE buffer pH 9.0; (\*) Alternatively, antigen retrieval may be performed with citrate buffer pH 6.0**

### Positive Controls:

WB : K-562 cells, NIH/3T3 cells

IHC : human breast cancer tissue,

## Background Information

Inositol polyphosphate phosphatase-like protein 1(INPPL1) belongs to the inositol and phosphatidylinositol 5-phosphatase family, also known as SH2 domain-containing inositol 5'-phosphatase 2(SHIP2), is ubiquitous in all organizations. SHIP2 is constitutively tyrosine-phosphorylated in chronic myeloid leukemia progenitor cells. In B cells, SHIP2 was most tyrosine phosphorylated after BCR and FC-γ riib crosslinking and was associated with Shc, but not after BCR stimulation alone.

## Storage

### Storage:

Store at -20°C. Stable for one year after shipment.

### Storage Buffer:

PBS with 0.02% sodium azide and 50% glycerol, pH7.3

Aliquoting is unnecessary for -20°C storage

\*\*\* 20ul sizes contain 0.1% BSA

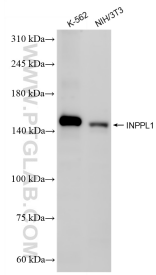
For technical support and original validation data for this product please contact:

T: 1 (888) 4PTGLAB (1-888-478-4522) (toll free in USA), or 1(312) 455-8498 (outside USA)

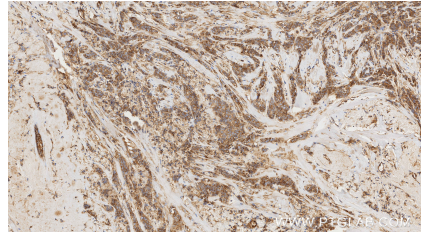
E: proteintech@ptglab.com  
W: ptglab.com

This product is exclusively available under Proteintech Group brand and is not available to purchase from any other manufacturer.

## Selected Validation Data



Various lysates were subjected to SDS PAGE followed by western blot with 87161-1-RR (INPPL1 antibody) at dilution of 1:1000 incubated at room temperature for 1.5 hours.



Immunohistochemical analysis of paraffin-embedded human breast cancer tissue slide using 87161-1-RR (INPPL1 antibody) at dilution of 1:1000 (under 10x lens). Heat mediated antigen retrieval with Tris-EDTA buffer (pH 9.0).