

For Research Use Only

# Mouse VPS13C Recombinant monoclonal antibody, PBS Only (Detector)

Catalog Number: 87162-2-PBS



## Basic Information

<b>Catalog Number:</b> 87162-2-PBS	<b>GenBank Accession Number:</b> NM_177184	<b>Purification Method:</b> Protein A purification
<b>Size:</b> 100ug, Concentration: 1 mg/ml by Nanodrop;	<b>GeneID (NCBI):</b> 320528	<b>CloneNo.:</b> 252231E9
<b>Source:</b> Rabbit	<b>UNIPROT ID:</b> Q8BX70	
<b>Isotype:</b> IgG	<b>Full Name:</b> vacuolar protein sorting 13C (yeast)	
<b>Immunogen Catalog Number:</b> AG29434		

## Applications

**Tested Applications:**  
Sandwich ELISA, Indirect ELISA

**Species Specificity:**  
mouse

## Product Information

87162-2-PBS targets VPS13C as part of a matched antibody pair:

MP02898-1: 87162-3-PBS capture and 87162-2-PBS detection (validated in Sandwich ELISA)

Unconjugated rabbit recombinant monoclonal antibody in PBS only (BSA and azide free) storage buffer at a concentration of 1 mg/mL, ready for conjugation. Created using Proteintech's proprietary in-house recombinant technology. Recombinant production enables unrivalled batch-to-batch consistency, easy scale-up, and future security of supply.

This conjugation ready format makes antibodies ideal for use in many applications including: ELISAs, multiplex assays requiring matched pairs, mass cytometry, and multiplex imaging applications. Antibody use should be optimized by the end user for each application and assay.

## Storage

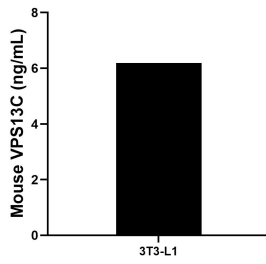
**Storage:**  
Store at -80°C.

**Storage Buffer:**  
PBS only, pH7.3

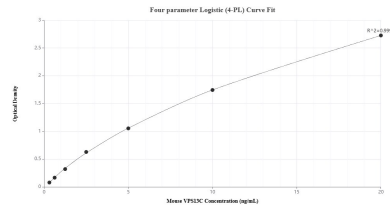
For technical support and original validation data for this product please contact:  
T: 1 (888) 4PTGLAB (1-888-478-4522) (toll free in USA), or 1(312) 455-8498 (outside USA)      E: proteintech@ptglab.com  
W: ptglab.com

**This product is exclusively available under Proteintech Group brand and is not available to purchase from any other manufacturer.**

## Selected Validation Data



The mean VPS13C concentration was determined to be 6.19 ng/mL in 3T3-L1 cell extract based on a 1.3 mg/mL extract load.



Sandwich ELISA standard curve of MP02898-1, Mouse VPS13C Recombinant Matched Antibody Pair - PBS only. 87162-3-PBS was coated to a plate as the capture antibody and incubated with serial dilutions of standard Ag29434. 87162-2-PBS was HRP conjugated as the detection antibody. Range: 0.313-20 ng/mL