

For Research Use Only

Mouse VPS13C Recombinant monoclonal antibody, PBS Only (Capture)

Catalog Number: 87162-3-PBS



Basic Information

Catalog Number: 87162-3-PBS	GenBank Accession Number: NM_177184	Purification Method: Protein A purification
Size: 100ug, Concentration: 1 mg/ml by Nanodrop;	GeneID (NCBI): 320528	CloneNo.: 252231B7
Source: Rabbit	UNIPROT ID: Q8BX70	
Isotype: IgG	Full Name: vacuolar protein sorting 13C (yeast)	
Immunogen Catalog Number: AG29434		

Applications

Tested Applications:
Sandwich ELISA, Indirect ELISA

Species Specificity:
mouse

Product Information

87162-3-PBS targets VPS13C as part of a matched antibody pair:

MP02898-1: 87162-3-PBS capture and 87162-2-PBS detection (validated in Sandwich ELISA)

Unconjugated rabbit recombinant monoclonal antibody in PBS only (BSA and azide free) storage buffer at a concentration of 1 mg/mL, ready for conjugation. Created using Proteintech's proprietary in-house recombinant technology. Recombinant production enables unrivalled batch-to-batch consistency, easy scale-up, and future security of supply.

This conjugation ready format makes antibodies ideal for use in many applications including: ELISAs, multiplex assays requiring matched pairs, mass cytometry, and multiplex imaging applications. Antibody use should be optimized by the end user for each application and assay.

Storage

Storage:
Store at -80°C.

Storage Buffer:
PBS only, pH7.3

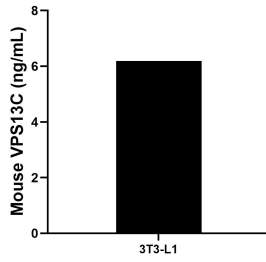
For technical support and original validation data for this product please contact:

T: 1 (888) 4PTGLAB (1-888-478-4522) (toll free in USA), or 1(312) 455-8498 (outside USA)

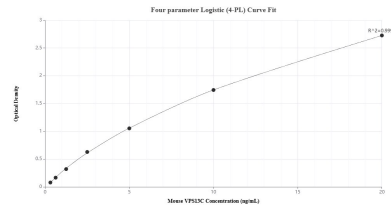
E: proteintech@ptglab.com
W: ptglab.com

This product is exclusively available under Proteintech Group brand and is not available to purchase from any other manufacturer.

Selected Validation Data



The mean VPS13C concentration was determined to be 6.19 ng/mL in 3T3-L1 cell extract based on a 1.3 mg/mL extract load.



Sandwich ELISA standard curve of MP02898-1, Mouse VPS13C Recombinant Matched Antibody Pair - PBS only. 87162-3-PBS was coated to a plate as the capture antibody and incubated with serial dilutions of standard Ag29434. 87162-2-PBS was HRP conjugated as the detection antibody. Range: 0.313-20 ng/mL