

For Research Use Only

LY86 Recombinant monoclonal antibody, PBS Only (Capture)

Catalog Number: 87173-1-PBS



Basic Information

Catalog Number: 87173-1-PBS	GenBank Accession Number: NM_004271.4	Purification Method: Protein A purification
Size: 100ug, Concentration: 1 mg/ml by Nanodrop;	GeneID (NCBI): 9450	CloneNo.: 252168G12
Source: Rabbit	UNIPROT ID: O95711	
Isotype: IgG	Full Name: lymphocyte antigen 86	
Immunogen Catalog Number: EG3108	Calculated MW: 18 kDa	
	Observed MW: 20 kDa	

Applications

Tested Applications:
WB, Sandwich ELISA, Indirect ELISA

Species Specificity:
human

Product Information

87173-1-PBS targets LY86 as part of a matched antibody pair:

MP02941-1: 87173-1-PBS capture and 87173-3-PBS detection (validated in Sandwich ELISA)

Unconjugated rabbit recombinant monoclonal antibody in PBS only (BSA and azide free) storage buffer at a concentration of 1 mg/mL, ready for conjugation. Created using Proteintech's proprietary in-house recombinant technology. Recombinant production enables unrivalled batch-to-batch consistency, easy scale-up, and future security of supply.

This conjugation ready format makes antibodies ideal for use in many applications including: ELISAs, multiplex assays requiring matched pairs, mass cytometry, and multiplex imaging applications. Antibody use should be optimized by the end user for each application and assay.

Background Information

LY86, also known as protein MD-1, is a secreted glycoprotein that is associated with RP105 (TLR family proteins) and plays a significant role in the B cell surface expression of RP105. The RP105/MD-1 complex is expressed on immune cells, including B cells, macrophages, and dendritic cells. (PMID: 37861500)

Storage

Storage:
Store at -80°C.

Storage Buffer:
PBS only, pH7.3

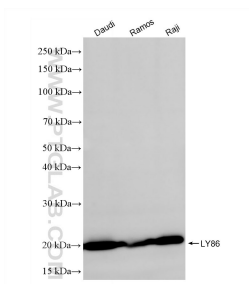
For technical support and original validation data for this product please contact:

T: 1 (888) 4PTGLAB (1-888-478-4522) (toll free in USA), or 1(312) 455-8498 (outside USA)

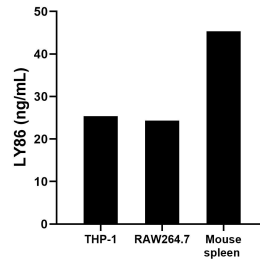
E: proteintech@ptglab.com
W: ptglab.com

This product is exclusively available under Proteintech Group brand and is not available to purchase from any other manufacturer.

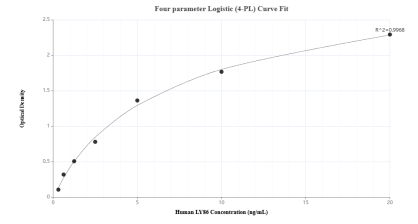
Selected Validation Data



Various lysates were subjected to SDS PAGE followed by western blot with 87173-1-RR (LY86 antibody) at dilution of 1:2000 incubated at room temperature for 1.5 hours. This data was developed using the same antibody clone with 87173-1-PBS in a different storage buffer formulation.



The mean LY86 concentration was determined to be 25.36 ng/mL in THP-1 cell extract based on a 1.2 mg/mL extract load, 24.32 ng/mL in RAW264.7 cell extract based on a 1.3 mg/mL extract load and 45.34 ng/mL in mouse spleen tissue extract based on a 6.4 mg/mL extract load.



Sandwich ELISA standard curve of MP02941-1, Human LY86 Recombinant Matched Antibody Pair - PBS only. 87173-1-PBS was coated to a plate as the capture antibody and incubated with serial dilutions of standard Eg3108. 87173-3-PBS was HRP conjugated as the detection antibody. Range: 0.313-20 ng/mL