

For Research Use Only

# EBP50/NHERF-1 Recombinant monoclonal antibody, PBS Only (Detector)

Catalog Number: 87174-1-PBS



## Basic Information

<b>Catalog Number:</b> 87174-1-PBS	<b>GenBank Accession Number:</b> NM_004252	<b>Purification Method:</b> Protein A purification
<b>Size:</b> 100ug, Concentration: 1 mg/ml by Nanodrop;	<b>GeneID (NCBI):</b> 9368	<b>CloneNo.:</b> 252465A2
<b>Source:</b> Rabbit	<b>UNIPROT ID:</b> O14745	
<b>Isotype:</b> IgG	<b>Full Name:</b> solute carrier family 9 (sodium/hydrogen exchanger), member 3 regulator 1	
<b>Immunogen Catalog Number:</b> AG30878	<b>Calculated MW:</b> 39 kDa	
	<b>Observed MW:</b> 50 kDa	

## Applications

**Tested Applications:**  
WB, Cytometric bead array, Indirect ELISA

**Species Specificity:**  
human, rat

## Product Information

87174-1-PBS targets EBP50/NHERF-1 as part of a matched antibody pair.

MP02896-1: 87174-2-PBS capture and 87174-1-PBS detection (validated in Cytometric bead array)

Unconjugated rabbit recombinant monoclonal antibody in PBS only (BSA and azide free) storage buffer at a concentration of 1 mg/mL, ready for conjugation. Created using Proteintech's proprietary in-house recombinant technology. Recombinant production enables unrivalled batch-to-batch consistency, easy scale-up, and future security of supply.

This conjugation ready format makes antibodies ideal for use in many applications including: ELISAs, multiplex assays requiring matched pairs, mass cytometry, and multiplex imaging applications. Antibody use should be optimized by the end user for each application and assay.

## Background Information

Na<sup>+</sup>/H<sup>+</sup> exchanger regulatory factor 1 (NHERF-1, also known as EBP50 ezrin-binding protein of 50 kDa, SLCA9A3R1) is a phosphoprotein that assembles multiprotein complexes via two PDZ domains and a C-terminal ezrin-binding domain. NHERF-1 was initially recognized as a scaffolding protein that recruits membrane transporters/receptors and cytoplasmic signaling proteins into functional complexes localized at or near the plasma membrane in epithelial cells (PMID: 19308292).

## Storage

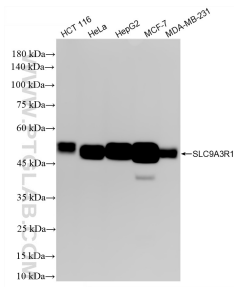
**Storage:**  
Store at -80°C.

**Storage Buffer:**  
PBS only, pH7.3

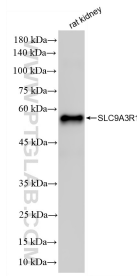
For technical support and original validation data for this product please contact:  
T: 1 (888) 4PTGLAB (1-888-478-4522) (toll free in USA), or 1(312) 455-8498 (outside USA)      E: proteintech@ptglab.com  
W: ptglab.com

This product is exclusively available under Proteintech Group brand and is not available to purchase from any other manufacturer.

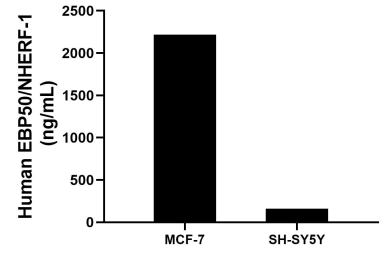
## Selected Validation Data



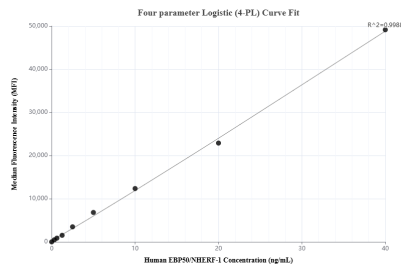
Various lysates were subjected to SDS PAGE followed by western blot with 87174-1-RR (SLC9A3R1 antibody) at dilution of 1:40000 incubated at room temperature for 1.5 hours. This data was developed using the same antibody clone with 87174-1-PBS in a different storage buffer formulation.



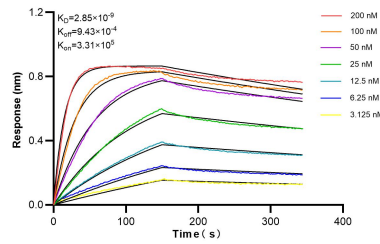
rat kidney tissue were subjected to SDS PAGE followed by western blot with 87174-1-RR (SLC9A3R1 antibody) at dilution of 1:40000 incubated at room temperature for 1.5 hours. This data was developed using the same antibody clone with 87174-1-PBS in a different storage buffer formulation.



The mean EBP50/NHERF-1 concentration was determined to be 2219.3 ng/mL in MCF-7 cell extract based on a 1.2 mg/mL extract load, 162.0 ng/mL in SH-SY5Y cell extract based on a 1.2 mg/mL extract load.



Cytometric bead array standard curve of MP02896-1, EBP50/NHERF-1 Recombinant Matched Antibody Pair, PBS Only. Capture antibody: 87174-2-PBS. Detection antibody: 87174-1-PBS. Standard: Ag30878. Range: 0.312-40 ng/mL.



Biolayer interferometry (BLI) kinetic assays of 87174-1-RR against Human EBP50/NHERF-1 were performed. The affinity constant is 2.85 nM.