

For Research Use Only

# EBP50/NHERF-1 Recombinant monoclonal antibody

Catalog Number: 87174-1-RR



## Basic Information

<b>Catalog Number:</b> 87174-1-RR	<b>GenBank Accession Number:</b> NM_004252	<b>Purification Method:</b> Protein A purification
<b>Size:</b> 100ul , Concentration: 1000 µg/ml by Nanodrop;	<b>GeneID (NCBI):</b> 9368	<b>CloneNo.:</b> 252465A2
<b>Source:</b> Rabbit	<b>UNIPROT ID:</b> O14745	<b>Recommended Dilutions:</b> WB: 1:5000-1:50000
<b>Isotype:</b> IgG	<b>Full Name:</b> solute carrier family 9 (sodium/hydrogen exchanger), member 3 regulator 1	
<b>Immunogen Catalog Number:</b> AG30878	<b>Calculated MW:</b> 39 kDa	
	<b>Observed MW:</b> 50 kDa	

## Applications

<b>Tested Applications:</b> WB, ELISA	<b>Positive Controls:</b> WB : HCT 116 cells, rat kidney tissue, HeLa cells, HepG2 cells, MCF-7 cells, MDA-MB-231 cells
<b>Species Specificity:</b> human, rat	

## Background Information

Na<sup>+</sup>/H<sup>+</sup> exchanger regulatory factor 1 (NHERF-1, also known as EBP50 ezrin-binding protein of 50 kDa, SLCA9A3R1) is a phosphoprotein that assembles multiprotein complexes via two PDZ domains and a C-terminal ezrin-binding domain. NHERF-1 was initially recognized as a scaffolding protein that recruits membrane transporters/receptors and cytoplasmic signaling proteins into functional complexes localized at or near the plasma membrane in epithelial cells (PMID: 19308292).

## Storage

**Storage:**  
Store at -20°C. Stable for one year after shipment.  
**Storage Buffer:**  
PBS with 0.02% sodium azide and 50% glycerol, pH7.3  
Aliquoting is unnecessary for -20°C storage

\*\*\* 20ul sizes contain 0.1% BSA

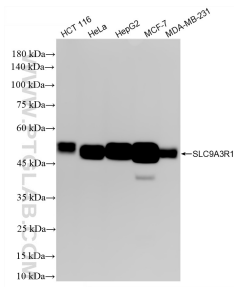
For technical support and original validation data for this product please contact:

T: 1 (888) 4PTGLAB (1-888-478-4522) (toll free in USA), or 1(312) 455-8498 (outside USA)

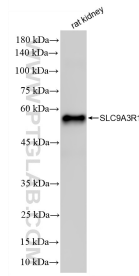
E: [proteintech@ptglab.com](mailto:proteintech@ptglab.com)  
W: [ptglab.com](http://ptglab.com)

This product is exclusively available under Proteintech Group brand and is not available to purchase from any other manufacturer.

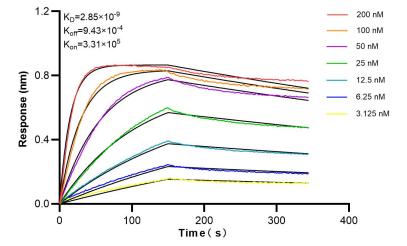
## Selected Validation Data



Various lysates were subjected to SDS PAGE followed by western blot with 87174-1-RR (SLC9A3R1 antibody) at dilution of 1:40000 incubated at room temperature for 1.5 hours.



rat kidney tissue were subjected to SDS PAGE followed by western blot with 87174-1-RR (SLC9A3R1 antibody) at dilution of 1:40000 incubated at room temperature for 1.5 hours.



Bi-layer interferometry (BLI) kinetic assays of 87174-1-RR against Human EBP50/NHERF-1 were performed. The affinity constant is 2.85 nM.