

For Research Use Only

ERCC1 Recombinant monoclonal antibody, PBS Only

Catalog Number:87175-3-PBS



Basic Information

Catalog Number:

87175-3-PBS

Size:

100ug, Concentration: 1 mg/ml by Nanodrop;

Source:

Rabbit

Isotype:

IgG

Immunogen Catalog Number:

AG6112

GenBank Accession Number:

BC052813

GeneID (NCBI):

2067

UNIPROT ID:

P07992

Full Name:

excision repair cross-complementing rodent repair deficiency, complementation group 1 (includes overlapping antisense sequence)

Calculated MW:

33 kDa

Observed MW:

40 kDa

Purification Method:

Protein A purification

CloneNo.:

252372B6

Applications

Tested Applications:

WB, IF/ICC, Indirect ELISA

Species Specificity:

human

Background Information

Excision Repair Cross Complementing 1 (ERCC1) is a structure-specific endonuclease that is responsible for the 5'-incision during DNA repair. It forms a complex with ERCC11, XPF and ERCC4, which are required in both recombinatorial repair and nucleotide excision repair. It has been found that ERCC1, together with RRM1, are determinants of survival after surgical treatment of early-stage, non-small-cell lung cancer. (Ref: Simon, ER. 2005). The calculated molecular weight of ERCC1 is 33 kDa, but the modified ERCC1 is about 38 kDa.

Storage

Storage:

Store at -80°C.

Storage Buffer:

PBS only, pH7.3

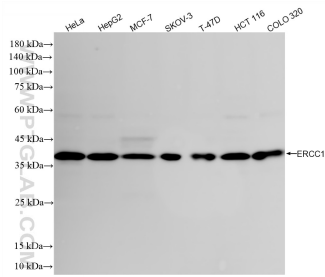
For technical support and original validation data for this product please contact:

T: 1 (888) 4PTGLAB (1-888-478-4522) (toll free in USA), or 1(312) 455-8498 (outside USA)

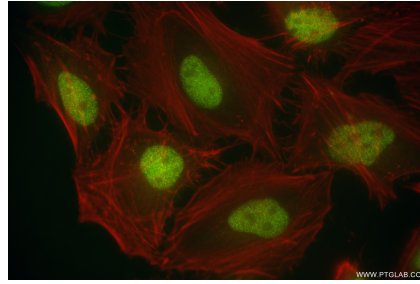
E: proteintech@ptglab.com
W: ptglab.com

This product is exclusively available under Proteintech Group brand and is not available to purchase from any other manufacturer.

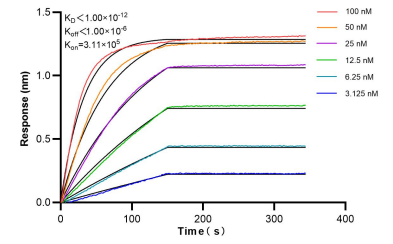
Selected Validation Data



Various lysates were subjected to SDS PAGE followed by western blot with 87175-3-RR (ERCC1 antibody) at dilution of 1:5000 incubated at room temperature for 1.5 hours. This data was developed using the same antibody clone with 87175-3-PBS in a different storage buffer formulation.



Immunofluorescent analysis of (4% PFA) fixed HeLa cells using ERCC1 antibody (87175-3-RR, Clone: 252372B6) at dilution of 1:800 and CoraLite® 488-Conjugated Goat Anti-Rabbit IgG(H+L) (SA00013-2), CL594-Phalloidin (red). This data was developed using the same antibody clone with 87175-3-PBS in a different storage buffer formulation.



Bi-layer interferometry (BLI) kinetic assays of 87175-3-RR against Human ERCC1 were performed. The affinity constant is below 1 pM.