

For Research Use Only

APH1A Recombinant monoclonal antibody, PBS Only

Catalog Number: 87181-1-PBS



Basic Information

Catalog Number: 87181-1-PBS	GenBank Accession Number: BC015568	Purification Method: Protein A purification
Size: 100ug, Concentration: 1 mg/ml by Nanodrop;	GeneID (NCBI): 51107	CloneNo.: 251353F8
Source: Rabbit	UNIPROT ID: Q96BI3	
Isotype: IgG	Full Name: anterior pharynx defective 1 homolog A (C. elegans)	
	Calculated MW: 265 aa, 29 kDa	
	Observed MW: 21 kDa	

Applications

Tested Applications:
WB, IF/ICC, Indirect ELISA

Species Specificity:
human

Background Information

APH1A is a component of the gamma secretase complex that cleaves integral membrane proteins such as Notch receptors and beta-amyloid precursor protein. The gamma secretase complex contains this gene product, or the paralogous anterior pharynx defective 1 homolog B (APH1B), along with the presenilin, nicastrin, and presenilin enhancer-2 proteins. The precise function of this seven-transmembrane-domain protein is unknown though it is suspected of facilitating the association of nicastrin and presenilin in the gamma secretase complex as well as interacting with substrates of the gamma secretase complex prior to their proteolytic processing. Polymorphisms in a promoter region of this gene have been associated with an increased risk for developing sporadic Alzheimer's disease.

Storage

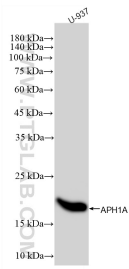
Storage:
Store at -80°C.

Storage Buffer:
PBS only, pH7.3

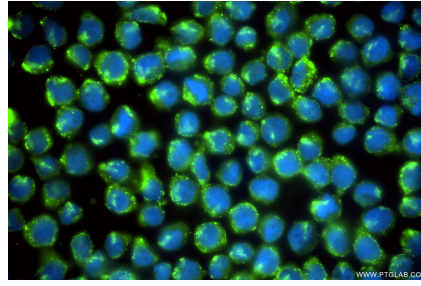
For technical support and original validation data for this product please contact:
T: 1 (888) 4PTGLAB (1-888-478-4522) (toll free in USA), or 1(312) 455-8498 (outside USA) E: proteintech@ptglab.com
W: ptglab.com

This product is exclusively available under Proteintech Group brand and is not available to purchase from any other manufacturer.

Selected Validation Data



U-937 cells were subjected to SDS PAGE followed by western blot with 87181-1-RR (APH1A antibody) at dilution of 1:5000 incubated at room temperature for 1.5 hours. This data was developed using the same antibody clone with 87181-1-PBS in a different storage buffer formulation.



Immunofluorescent analysis of (4% PFA) fixed U-937 cells using APH1A antibody (87181-1-RR, Clone: 251353F8) at dilution of 1:200 and CoraLite® 488-Conjugated Goat Anti-Rabbit IgG(H+L) (SA00013-2). This data was developed using the same antibody clone with 87181-1-PBS in a different storage buffer formulation.