

For Research Use Only

APH1A Recombinant monoclonal antibody

Catalog Number: 87181-1-RR



Basic Information

Catalog Number: 87181-1-RR	GenBank Accession Number: BC015568	Purification Method: Protein A purification
Size: 100ul , Concentration: 1000 µg/ml by Nanodrop;	GeneID (NCBI): 51107	CloneNo.: 251353F8
Source: Rabbit	UNIPROT ID: Q96BI3	Recommended Dilutions: WB: 1:2000-1:10000 IF/ICC: 1:50-1:500
Isotype: IgG	Full Name: anterior pharynx defective 1 homolog A (C. elegans)	
	Calculated MW: 265 aa, 29 kDa	
	Observed MW: 21 kDa	

Applications

Tested Applications: WB, IF/ICC, ELISA	Positive Controls:
Species Specificity: human	WB : U-937 cells, IF/ICC : U-937 cells,

Background Information

APH1A is a component of the gamma secretase complex that cleaves integral membrane proteins such as Notch receptors and beta-amyloid precursor protein. The gamma secretase complex contains this gene product, or the paralogous anterior pharynx defective 1 homolog B (APH1B), along with the presenilin, nicastrin, and presenilin enhancer-2 proteins. The precise function of this seven-transmembrane-domain protein is unknown though it is suspected of facilitating the association of nicastrin and presenilin in the gamma secretase complex as well as interacting with substrates of the gamma secretase complex prior to their proteolytic processing. Polymorphisms in a promoter region of this gene have been associated with an increased risk for developing sporadic Alzheimer's disease.

Storage

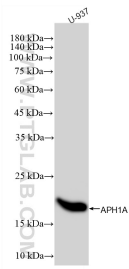
Storage:
Store at -20°C. Stable for one year after shipment.
Storage Buffer:
PBS with 0.02% sodium azide and 50% glycerol, pH7.3
Aliquoting is unnecessary for -20°C storage

*** 20ul sizes contain 0.1% BSA

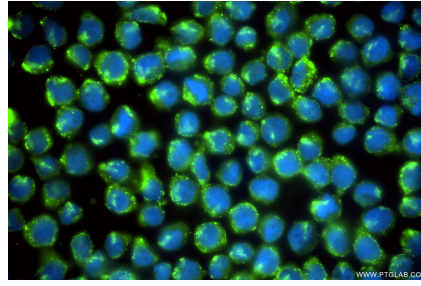
For technical support and original validation data for this product please contact:
T: 1 (888) 4PTGLAB (1-888-478-4522) (toll free in USA), or 1(312) 455-8498 (outside USA)
E: proteintech@ptglab.com
W: ptglab.com

This product is exclusively available under Proteintech Group brand and is not available to purchase from any other manufacturer.

Selected Validation Data



U-937 cells were subjected to SDS PAGE followed by western blot with 87181-1-RR (APh1A antibody) at dilution of 1:5000 incubated at room temperature for 1.5 hours.



Immunofluorescent analysis of (4% PFA) fixed U-937 cells using APh1A antibody (87181-1-RR, Clone: 251353F8) at dilution of 1:200 and CoraLite® 488-Conjugated Goat Anti-Rabbit IgG(H+L) (SA00013-2).