

For Research Use Only

TMX2 Recombinant monoclonal antibody, PBS Only (Detector)

Catalog Number: 87183-1-PBS



Basic Information

Catalog Number: 87183-1-PBS	GenBank Accession Number: BC000666	Purification Method: Protein A purification
Size: 100ug , Concentration: 1 mg/ml by Nanodrop;	GeneID (NCBI): 51075	CloneNo.: 252474C2
Source: Rabbit	UNIPROT ID: Q9Y320	
Isotype: IgG	Full Name: thioredoxin-related transmembrane protein 2	
Immunogen Catalog Number: AG13828	Calculated MW: 296 aa, 34 kDa	
	Observed MW: 34 kDa	

Applications

Tested Applications:
WB, Cytometric bead array, Indirect ELISA

Species Specificity:
human

Product Information

87183-1-PBS targets TMX2 as part of a matched antibody pair:

MP02911-1: 87183-2-PBS capture and 87183-1-PBS detection (validated in Cytometric bead array)

Unconjugated rabbit recombinant monoclonal antibody in PBS only (BSA and azide free) storage buffer at a concentration of 1 mg/mL, ready for conjugation. Created using Proteintech's proprietary in-house recombinant technology. Recombinant production enables unrivalled batch-to-batch consistency, easy scale-up, and future security of supply.

This conjugation ready format makes antibodies ideal for use in many applications including: ELISAs, multiplex assays requiring matched pairs, mass cytometry, and multiplex imaging applications. Antibody use should be optimized by the end user for each application and assay.

Background Information

Thioredoxin-related transmembrane proteins (TMXs) are protein disulfide isomerase (PDI) family members and possess a transmembrane region. TMX2 cDNA was first isolated in 2003, and TMX2 mRNA has been found in a variety of human tissues, with the highest levels in the heart, brain, liver, kidney, and pancreas.

Storage

Storage:
Store at -80°C.

Storage Buffer:
PBS only, pH7.3

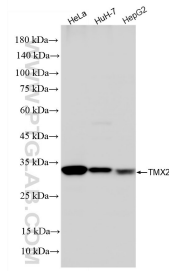
For technical support and original validation data for this product please contact:

T: 1 (888) 4PTGLAB (1-888-478-4522) (toll free in USA), or 1(312) 455-8498 (outside USA)

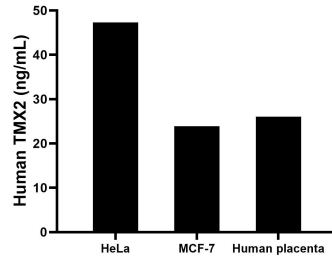
E: proteintech@ptglab.com
W: ptglab.com

This product is exclusively available under Proteintech Group brand and is not available to purchase from any other manufacturer.

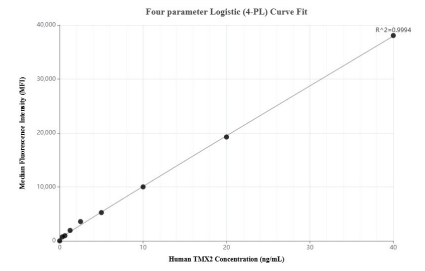
Selected Validation Data



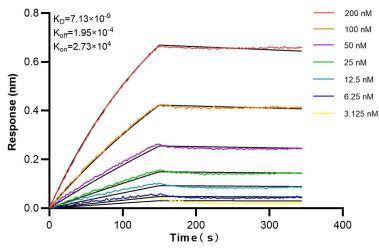
Various lysates were subjected to SDS PAGE followed by western blot with 87183-1-RR (TMX2 antibody) at dilution of 1:20000 incubated at room temperature for 1.5 hours. This data was developed using the same antibody clone with 87183-1-PBS in a different storage buffer formulation.



The mean TMX2 concentration was determined to be 47.3 ng/mL in HeLa cell extract based on a 1.2 mg/mL extract load, 23.9 ng/mL in MCF-7 cell extract based on a 1.2 mg/mL extract load, 26.0 ng/mL in human placenta cell extract based on a 3.2 mg/mL extract load.



Cytometric bead array standard curve of MP02911-1, TMX2 Recombinant Matched Antibody Pair, PBS Only. Capture antibody: 87183-2-PBS. Detection antibody: 87183-1-PBS. Standard: Ag13828. Range: 0.312-40 ng/mL.



Biolayer interferometry (BLI) kinetic assays of 87183-1-RR against Human TMX2 were performed. The affinity constant is 7.13 nM.