

For Research Use Only

Serum amyloid A-1/SAA1 Recombinant monoclonal antibody, PBS Only (Detector)



Catalog Number: 87184-1-PBS

Basic Information

Catalog Number: 87184-1-PBS	GenBank Accession Number: GeneID (NCBI): 6288	Purification Method: Protein A purification
Size: 100ug , Concentration: 1 mg/ml by Nanodrop;	UNIPROT ID: PODJ18	CloneNo.: 251324A8
Source: Rabbit	Full Name: serum amyloid A1	
Isotype: IgG	Calculated MW: 14kDa	
Immunogen Catalog Number: EG4687		

Applications

Tested Applications:
Cytometric bead array, Indirect ELISA

Species Specificity:
human

Product Information

87184-1-PBS targets Serum amyloid A-1/SAA1 as part of a matched antibody pair:

MP02910-1: 87185-1-PBS capture and 87184-1-PBS detection (validated in Cytometric bead array)

Unconjugated rabbit recombinant monoclonal antibody in PBS only (BSA and azide free) storage buffer at a concentration of 1 mg/mL, ready for conjugation. Created using Proteintech's proprietary in-house recombinant technology. Recombinant production enables unrivalled batch-to-batch consistency, easy scale-up, and future security of supply.

This conjugation ready format makes antibodies ideal for use in many applications including: ELISAs, multiplex assays requiring matched pairs, mass cytometry, and multiplex imaging applications. Antibody use should be optimized by the end user for each application and assay.

Storage

Storage:
Store at -80°C.
Storage Buffer:
PBS only, pH7.3

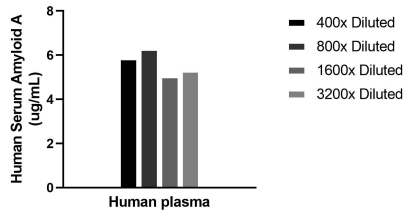
For technical support and original validation data for this product please contact:

T: 1 (888) 4PTGLAB (1-888-478-4522) (toll free in USA), or 1(312) 455-8498 (outside USA)

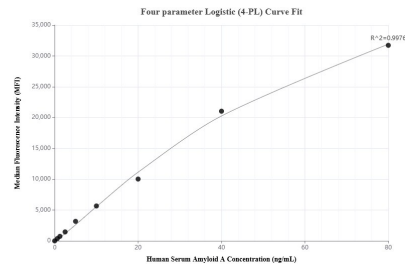
E: proteintech@ptglab.com
W: ptglab.com

This product is exclusively available under Proteintech Group brand and is not available to purchase from any other manufacturer.

Selected Validation Data



The mean Serum Amyloid A concentration was determined to be 5.6 ug/mL in human plasma.



Cytometric bead array standard curve of MP02910-1, Serum Amyloid A Recombinant Matched Antibody Pair, PBS Only. Capture antibody: 87185-1-PBS. Detection antibody: 87184-1-PBS. Standard: Eg4687. Range: 0.625-80 ng/mL.