

For Research Use Only

Serum amyloid A-1/SAA1 Recombinant monoclonal antibody, PBS Only (Capture)



Catalog Number: 87184-2-PBS

Basic Information

Catalog Number: 87184-2-PBS	GenBank Accession Number: GeneID (NCBI): 6288	Purification Method: Protein A purification
Size: 100ug , Concentration: 1 mg/ml by Nanodrop;	UNIPROT ID: PODJ18	CloneNo.: 251324D4
Source: Rabbit	Full Name: serum amyloid A1	
Isotype: IgG	Calculated MW: 14kDa	
Immunogen Catalog Number: EG4687		

Applications

Tested Applications:
Sandwich ELISA, Indirect ELISA

Species Specificity:
human

Product Information

87184-2-PBS targets Serum amyloid A-1/SAA1 as part of a matched antibody pair:

MP02910-2: 87184-2-PBS capture and 87185-2-PBS detection (validated in Sandwich ELISA)

Unconjugated rabbit recombinant monoclonal antibody in PBS only (BSA and azide free) storage buffer at a concentration of 1 mg/mL, ready for conjugation. Created using Proteintech's proprietary in-house recombinant technology. Recombinant production enables unrivalled batch-to-batch consistency, easy scale-up, and future security of supply.

This conjugation ready format makes antibodies ideal for use in many applications including: ELISAs, multiplex assays requiring matched pairs, mass cytometry, and multiplex imaging applications. Antibody use should be optimized by the end user for each application and assay.

Storage

Storage:
Store at -80°C.

Storage Buffer:
PBS only, pH7.3

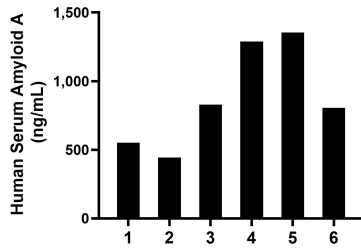
For technical support and original validation data for this product please contact:

T: 1 (888) 4PTGLAB (1-888-478-4522) (toll free in USA), or 1(312) 455-8498 (outside USA)

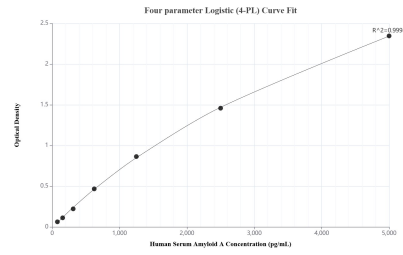
E: proteintech@ptglab.com
W: ptglab.com

This product is exclusively available under Proteintech Group brand and is not available to purchase from any other manufacturer.

Selected Validation Data



Plasma of six individual healthy human donors was measured. The Serum Amyloid A concentration of detected samples was determined to be 878.5 ng/mL with a range of 443.2-1,353.9 ng/mL.



Sandwich ELISA standard curve of MP02910-2, Human Serum Amyloid A Recombinant Matched Antibody Pair - PBS only. 87184-2-PBS was coated to a plate as the capture antibody and incubated with serial dilutions of standard Eg4687. 87185-2-PBS was HRP conjugated as the detection antibody. Range: 78.1-5000 pg/mL.