

For Research Use Only

CLPP Recombinant monoclonal antibody

Catalog Number: 87187-3-RR



Basic Information

Catalog Number: 87187-3-RR	GenBank Accession Number: BC002956	Purification Method: Protein A purification
Size: 100ul , Concentration: 1000 µg/ml by Nanodrop;	GeneID (NCBI): 8192	CloneNo.: 252470B7
Source: Rabbit	UNIPROT ID: Q16740	Recommended Dilutions: WB: 1:5000-1:50000
Isotype: IgG	Full Name: ClpP caseinolytic peptidase, ATP-dependent, proteolytic subunit homolog (E. coli)	
Immunogen Catalog Number: AG8325	Calculated MW: 30 kDa	
	Observed MW: 26 kDa	

Applications

Tested Applications: WB, ELISA	Positive Controls: WB : HEK-293T cells, A549 cells, Saos-2 cells. A431 cells, K-562 cells, mouse heart tissue, rat heart tissue
Species Specificity: human, mouse, rat	

Background Information

CLPP is the putative ATP-dependent Clp protease proteolytic subunit and also named as endopeptidase Clp. It belongs to the peptidase S14 family. Clp cleaves peptides in various proteins in a process that requires ATP hydrolysis. It may be responsible for a fairly general and central housekeeping function rather than for the degradation of specific substrates.

Storage

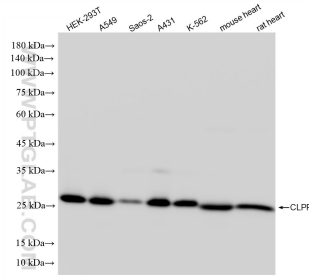
Storage:
Store at -20°C. Stable for one year after shipment.
Storage Buffer:
PBS with 0.02% sodium azide and 50% glycerol, pH7.3
Aliquoting is unnecessary for -20°C storage

*** 20ul sizes contain 0.1% BSA

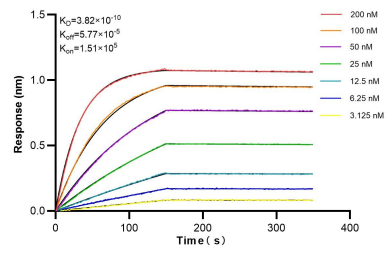
For technical support and original validation data for this product please contact:
T: 1 (888) 4PTGLAB (1-888-478-4522) (toll free in USA), or 1(312) 455-8498 (outside USA)
E: proteintech@ptglab.com
W: ptglab.com

This product is exclusively available under Proteintech Group brand and is not available to purchase from any other manufacturer.

Selected Validation Data



Various lysates were subjected to SDS PAGE followed by western blot with 87187-3-RR (CLPP antibody) at dilution of 1:10000 incubated at room temperature for 1.5 hours.



Biolayer interferometry (BLI) kinetic assays of 87187-3-RR against Human CLPP were performed. The affinity constant is 0.382 nM.