

For Research Use Only

COLEC11 Recombinant monoclonal antibody, PBS Only

Catalog Number: 87193-1-PBS



Basic Information

Catalog Number: 87193-1-PBS	GenBank Accession Number: BC000078	Purification Method: Protein A purification
Size: 100ug, Concentration: 1 mg/ml by Nanodrop;	GeneID (NCBI): 78989	CloneNo.: 252260F7
Source: Rabbit	UNIPROT ID: Q9BWP8	
Isotype: IgG	Full Name: collectin sub-family member 11	
Immunogen Catalog Number: AG7374	Calculated MW: 29 kDa	
	Observed MW: 34 kDa	

Applications

Tested Applications:
WB, Indirect ELISA

Species Specificity:
human, rat

Background Information

COLEC11, also named as CL-K1 and Collectin-11, belongs to the COLEC10/COLEC11 family. It is a lectin that binds to various sugars: fucose > mannose. It does not bind to glucose, N-acetylglucosamine and N-acetylgalactosamine. COLEC11 binds to LPS. COLEC11 and MASP1 are two genes in the lectin complement pathway, they are mutated in 3MC syndrome, implicating this diverse inflammation-chemotaxis cascade in the etiology of human developmental disorders. COLEC11 serves as a guidance cue for neural crest cell migration (PMID:21258343).

Storage

Storage:
Store at -80°C.

Storage Buffer:
PBS only, pH7.3

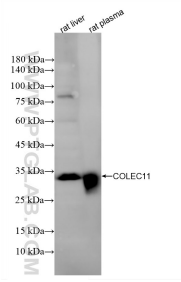
For technical support and original validation data for this product please contact:

T: 1 (888) 4PTGLAB (1-888-478-4522) (toll free in USA), or 1(312) 455-8498 (outside USA)

E: proteintech@ptglab.com
W: ptglab.com

This product is exclusively available under Proteintech Group brand and is not available to purchase from any other manufacturer.

Selected Validation Data



Various lysates were subjected to SDS PAGE followed by western blot with 87193-1-RR (COLEC11 antibody) at dilution of 1:1000 incubated at room temperature for 1.5 hours. This data was developed using the same antibody clone with 87193-1-PBS in a different storage buffer formulation.