

For Research Use Only

COLEC11 Recombinant monoclonal antibody

Catalog Number:87193-1-RR



Basic Information

Catalog Number: 87193-1-RR	GenBank Accession Number: BC000078	Purification Method: Protein A purification
Size: 100ul , Concentration: 1000 µg/ml by Nanodrop;	GeneID (NCBI): 78989	CloneNo.: 252260F7
Source: Rabbit	UNIPROT ID: Q9BWP8	Recommended Dilutions: WB: 1:500-1:2000
Isotype: IgG	Full Name: collectin sub-family member 11	
Immunogen Catalog Number: AG7374	Calculated MW: 29 kDa	
	Observed MW: 34 kDa	

Applications

Tested Applications: WB, ELISA	Positive Controls: WB : rat liver tissue, human plasma, rat plasma
Species Specificity: human, rat	

Background Information

COLEC11, also named as CL-K1 and Collectin-11, belongs to the COLEC10/COLEC11 family. It is a lectin that binds to various sugars: fucose > mannose. It does not bind to glucose, N-acetylglucosamine and N-acetylgalactosamine. COLEC11 binds to LPS. COLEC11 and MASP1 are two genes in the lectin complement pathway, they are mutated in 3MC syndrome, implicating this diverse inflammation-chemotaxis cascade in the etiology of human developmental disorders. COLEC11 serves as a guidance cue for neural crest cell migration (PMID:21258343).

Storage

Storage:
Store at -20°C. Stable for one year after shipment.
Storage Buffer:
PBS with 0.02% sodium azide and 50% glycerol, pH7.3
Aliquoting is unnecessary for -20°C storage

*** 20ul sizes contain 0.1% BSA

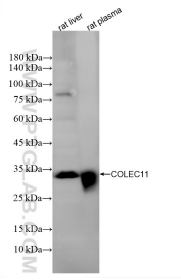
For technical support and original validation data for this product please contact:

T: 1 (888) 4PTGLAB (1-888-478-4522) (toll free in USA), or 1(312) 455-8498 (outside USA)

E: proteintech@ptglab.com
W: ptglab.com

This product is exclusively available under Proteintech Group brand and is not available to purchase from any other manufacturer.

Selected Validation Data



Various lysates were subjected to SDS PAGE followed by western blot with 87193-1-RR (COLEC11 antibody) at dilution of 1:1000 incubated at room temperature for 1.5 hours.