

For Research Use Only

APOL3 Recombinant monoclonal antibody, PBS Only

Catalog Number: 87202-1-PBS



Basic Information

Catalog Number: 87202-1-PBS	GenBank Accession Number: NM_145640	Purification Method: Protein A purification
Size: 100ug, Concentration: 1 mg/ml by Nanodrop;	GeneID (NCBI): 80833	CloneNo.: 252351G6
Source: Rabbit	UNIPROT ID: O95236	
Isotype: IgG	Full Name: apolipoprotein L, 3	
Immunogen Catalog Number: AG29687	Calculated MW: 44 kDa	
	Observed MW: 44 kDa	

Applications

Tested Applications:
WB, Indirect ELISA

Species Specificity:
human

Background Information

Apolipoprotein L3 (APOL3) is a member of the apolipoprotein L gene family, and it is present in a cluster with other family members on chromosome 22. APOL3 is localized in the cytoplasm and plays a central role in cholesterol transport, affecting the movement of lipids, including cholesterol, and allowing the binding of lipids to organelles.

Storage

Storage:
Store at -80°C.

Storage Buffer:
PBS only, pH7.3

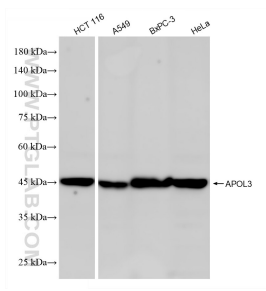
For technical support and original validation data for this product please contact:

T: 1 (888) 4PTGLAB (1-888-478-4522) (toll free in USA), or 1(312) 455-8498 (outside USA)

E: proteintech@ptglab.com
W: ptglab.com

This product is exclusively available under Proteintech Group brand and is not available to purchase from any other manufacturer.

Selected Validation Data



HCT 116 cells were subjected to SDS PAGE followed by western blot with 87202-1-RR (APOL3 antibody) at dilution of 1:2000 incubated at room temperature for 1.5 hours. This data was developed using the same antibody clone with 87202-1-PBS in a different storage buffer formulation.