

For Research Use Only

Phospho-RB1 (Ser608) Recombinant monoclonal antibody, PBS Only

Catalog Number: 87211-3-PBS



Basic Information

Catalog Number: 87211-3-PBS	GenBank Accession Number: BC039060	Purification Method: Protein A purification
Size: 100ug, Concentration: 1 mg/ml by Nanodrop;	GeneID (NCBI): 5925	CloneNo.: 252314G6
Source: Rabbit	UNIPROT ID: P06400	
Isotype: IgG	Full Name: retinoblastoma 1	
	Calculated MW: 928 aa, 106 kDa	
	Observed MW: 110 kDa	

Applications

Tested Applications:
WB, Indirect ELISA

Species Specificity:
human

Background Information

RB1, also named as pp110, pRb and p105 Rb, belongs to the retinoblastoma protein (RB) family. Ser608 is located within the "spacer" region of RB1, which connects the A and B pocket domains. This region is critical for RB1's interaction with various cellular proteins.

Storage

Storage:
Store at -80°C.

Storage Buffer:
PBS only, pH7.3

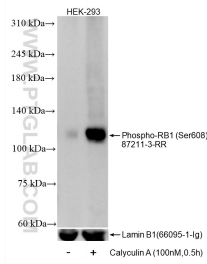
For technical support and original validation data for this product please contact:

T: 1 (888) 4PTGLAB (1-888-478-4522) (toll free in USA), or 1(312) 455-8498 (outside USA)

E: proteintech@ptglab.com
W: ptglab.com

This product is exclusively available under Proteintech Group brand and is not available to purchase from any other manufacturer.

Selected Validation Data



Non-treated HEK-293 cells and Calyculin A treated HEK-293 cells were subjected to SDS PAGE followed by western blot with 87211-3-RR (Phospho-RB1 (Ser608) antibody) at dilution of 1:5000 incubated at room temperature for 1.5 hours. The membrane was stripped and re-blotted with Lamin B1 (66095-1-Ig) antibody as a loading control. This data was developed using the same antibody clone with 87211-3-PBS in a different storage buffer formulation.