

For Research Use Only

Phospho-RB1 (Ser608) Recombinant monoclonal antibody

Catalog Number:87211-3-RR



Basic Information

Catalog Number:

87211-3-RR

Size:

100ul , Concentration: 1000 µg/ml by

Nanodrop;

Source:

Rabbit

Isotype:

IgG

GenBank Accession Number:

BC039060

GeneID (NCBI):

5925

UNIPROT ID:

P06400

Full Name:

retinoblastoma 1

Calculated MW:

928 aa, 106 kDa

Observed MW:

110 kDa

Purification Method:

Protein A purification

CloneNo.:

252314G6

Recommended Dilutions:

WB: 1:2000-1:10000

Applications

Tested Applications:

WB, ELISA

Species Specificity:

human

Positive Controls:

WB : Calyculin A treated HEK-293 cells,

Background Information

RB1, also named as pp110, pRb and p105 Rb, belongs to the retinoblastoma protein (RB) family. Ser608 is located within the "spacer" region of RB1, which connects the A and B pocket domains. This region is critical for RB1's interaction with various cellular proteins.

Storage

Storage:

Store at -20°C. Stable for one year after shipment.

Storage Buffer:

PBS with 0.02% sodium azide and 50% glycerol, pH7.3

Aliquoting is unnecessary for -20°C storage

*** 20ul sizes contain 0.1% BSA

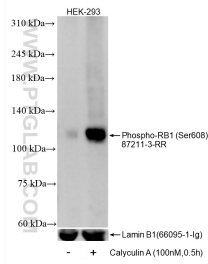
For technical support and original validation data for this product please contact:

T: 1 (888) 4PTGLAB (1-888-478-4522) (toll free in USA), or 1(312) 455-8498 (outside USA)

E: proteintech@ptglab.com
W: ptglab.com

This product is exclusively available under Proteintech Group brand and is not available to purchase from any other manufacturer.

Selected Validation Data



Non-treated HEK-293 cells and Calyculin A treated HEK-293 cells were subjected to SDS PAGE followed by western blot with 87211-3-RR (Phospho-RB1 (Ser608) antibody) at dilution of 1:5000 incubated at room temperature for 1.5 hours. The membrane was stripped and re-blotted with Lamin B1 (66095-1-Ig) antibody as a loading control.