

For Research Use Only

MCM8 Recombinant monoclonal antibody

Catalog Number: 87212-1-RR



Basic Information

Catalog Number: 87212-1-RR	GenBank Accession Number: BC008830	Purification Method: Protein A purification
Size: 100ul , Concentration: 1000 µg/ml by Nanodrop;	GeneID (NCBI): 84515	CloneNo.: 252460F9
Source: Rabbit	UNIPROT ID: Q9UJA3	Recommended Dilutions: WB: 1:20000-1:100000 IF/ICC: 1:400-1:1600
Isotype: IgG	Full Name: minichromosome maintenance complex component 8	
Immunogen Catalog Number: AG8430	Calculated MW: 880 aa, 98 kDa	
	Observed MW: 90-95 kDa	

Applications

Tested Applications: WB, IF/ICC, ELISA	Positive Controls:
Species Specificity: human, mouse, rat	WB : HCT 116 cells, NIH/3T3 cells, SW 480 cells, U2OS cells, HEK-293T cells, RAW 264.7 cells, HSC-T6 cells
	IF/ICC : NIH/3T3 cells,

Background Information

MCM8, also named as Minichromosome maintenance 8, is a 840 amino acid protein, which belongs to the MCM family. MCM8 is expressed highly in placenta, lung and pancreas and various tumors with highest levels in colon and lung cancers. MCM8 is a component of the MCM8-MCM9 complex, which involved in homologous recombination repair following DNA interstrand cross-links and plays a key role during gametogenesis.

Storage

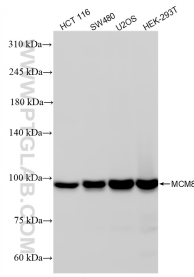
Storage:
Store at -20°C. Stable for one year after shipment.
Storage Buffer:
PBS with 0.02% sodium azide and 50% glycerol, pH7.3
Aliquoting is unnecessary for -20°C storage

*** 20ul sizes contain 0.1%BSA

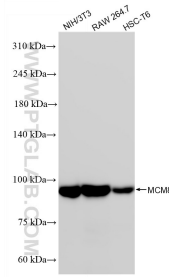
For technical support and original validation data for this product please contact:
T: 1 (888) 4PTGLAB (1-888-478-4522) (toll free in USA), or 1(312) 455-8498 (outside USA)
E: proteintech@ptglab.com
W: ptglab.com

This product is exclusively available under Proteintech Group brand and is not available to purchase from any other manufacturer.

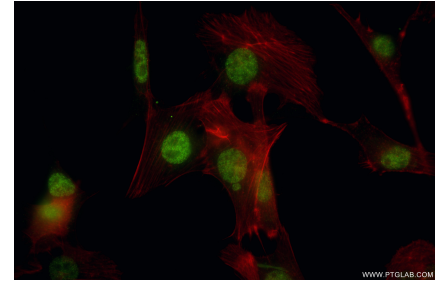
Selected Validation Data



Various lysates were subjected to SDS PAGE followed by western blot with 87212-1-RR (MCM8 antibody) at dilution of 1:100000 incubated at room temperature for 1.5 hours.



Various lysates were subjected to SDS PAGE followed by western blot with 87212-1-RR (MCM8 antibody) at dilution of 1:100000 incubated at room temperature for 1.5 hours.



Immunofluorescent analysis of (4% PFA) fixed NIH/3T3 cells using MCM8 antibody (87212-1-RR, Clone: 252460F9) at dilution of 1:800 and CoraLite®488-Conjugated Goat Anti-Rabbit IgG(H+L) (SA00013-2), CL594-Phalloidin (red).