

For Research Use Only

# SLC26A3 Recombinant monoclonal antibody

Catalog Number:87216-1-RR



## Basic Information

<b>Catalog Number:</b> 87216-1-RR	<b>GenBank Accession Number:</b> BC025671	<b>Purification Method:</b> Protein A purification
<b>Size:</b> 100ul , Concentration: 1000 µg/ml by Nanodrop;	<b>GeneID (NCBI):</b> 1811	<b>CloneNo.:</b> 252027E6
<b>Source:</b> Rabbit	<b>UNIPROT ID:</b> P40879	<b>Recommended Dilutions:</b> WB: 1:1000-1:4000
<b>Isotype:</b> IgG	<b>Full Name:</b> solute carrier family 26, member 3	
<b>Immunogen Catalog Number:</b> AG34479	<b>Calculated MW:</b> 764 aa, 85 kDa	
	<b>Observed MW:</b> 85 kDa	

## Applications

<b>Tested Applications:</b> WB, ELISA	<b>Positive Controls:</b> WB : HCT 116 cells, Caco-2 cells, COLO 205 cells, HEK-293 cells
<b>Species Specificity:</b> human	

## Background Information

SLC26A3 (Chloride anion exchanger), also known as DRA. It is expected to be located in the cytoplasm and cell membranes. It is a transmembrane glycoprotein, which is mainly located in the lower digestive tract mucosa, especially in the apical membrane of columnar epithelium and some goblet cells. The expression level of SLC26A3 in intestine is different along different parts of intestine, and there are also differences on crypt-villus axis. It is mainly expressed in the apical membrane of colon epithelial cells, less in jejunum and ileum, but not in esophagus. It participates in the absorption of electrically neutral NaCl in intestine and works with Na<sup>+</sup>/H<sup>+</sup> exchanger. Cl<sup>-</sup>/HCO<sub>3</sub><sup>-</sup> exchange mediated by SLC26A3 is very important for maintaining intestinal acid-base balance. In duodenum, the physiological function of SLC26A3 is related to HCO<sub>3</sub><sup>-</sup> secretion, which plays a central role in neutralizing gastric acid (PMID: 32989468). The molecular weight of SLC26A3 is 84 kDa.

## Storage

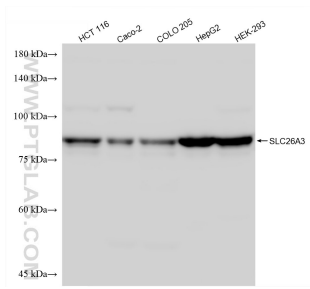
**Storage:**  
Store at -20°C. Stable for one year after shipment.  
**Storage Buffer:**  
PBS with 0.02% sodium azide and 50% glycerol, pH7.3  
Aliquoting is unnecessary for -20°C storage

\*\*\* 20ul sizes contain 0.1% BSA

For technical support and original validation data for this product please contact:  
T: 1 (888) 4PTGLAB (1-888-478-4522) (toll free in USA), or 1(312) 455-8498 (outside USA)  
E: proteintech@ptglab.com  
W: ptglab.com

This product is exclusively available under Proteintech Group brand and is not available to purchase from any other manufacturer.

## Selected Validation Data



Various lysates were subjected to SDS PAGE followed by western blot with 87216-1-RR (SLC26A3 antibody) at dilution of 1:2000 incubated at room temperature for 1.5 hours.