

For Research Use Only

# CDC45L Recombinant monoclonal antibody, PBS Only

Catalog Number:87219-1-PBS



## Basic Information

<b>Catalog Number:</b> 87219-1-PBS	<b>GenBank Accession Number:</b> BC010022	<b>Purification Method:</b> Protein A purification
<b>Size:</b> 100ug , Concentration: 1 mg/ml by Nanodrop;	<b>GeneID (NCBI):</b> 8318	<b>CloneNo.:</b> 252457D11
<b>Source:</b> Rabbit	<b>UNIPROT ID:</b> O75419	
<b>Isotype:</b> IgG	<b>Full Name:</b> CDC45 cell division cycle 45-like (S. cerevisiae)	
<b>Immunogen Catalog Number:</b> AG8150	<b>Calculated MW:</b> 64 kDa	
	<b>Observed MW:</b> 66 kDa	

## Applications

**Tested Applications:**  
WB, Indirect ELISA

**Species Specificity:**  
human, rat

## Background Information

CDC45L(Cell division control protein 45 homolog), plays a role in the initiation of DNA replication, and genetically interacts with MCM family members and with ORC2 and physically form a complex including Mcm5p. It's the first gene missed in DiGeorge syndrome that suggest involve in cell proliferation.

## Storage

**Storage:**  
Store at -80°C.

**Storage Buffer:**  
PBS only, pH7.3

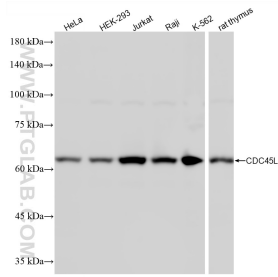
For technical support and original validation data for this product please contact:

T: 1 (888) 4PTGLAB (1-888-478-4522) (toll free in USA), or 1(312) 455-8498 (outside USA)

E: [proteintech@ptglab.com](mailto:proteintech@ptglab.com)  
W: [ptglab.com](http://ptglab.com)

**This product is exclusively available under Proteintech Group brand and is not available to purchase from any other manufacturer.**

## Selected Validation Data



Various lysates were subjected to SDS PAGE followed by western blot with 87219-1-RR (CDC45L antibody) at dilution of 1:2000 incubated at room temperature for 1.5 hours. This data was developed using the same antibody clone with 87219-1-PBS in a different storage buffer formulation.