

For Research Use Only

Phospho-AKT (Thr450) Recombinant monoclonal antibody, PBS Only

Catalog Number:87220-1-PBS



Basic Information

Catalog Number: 87220-1-PBS	GenBank Accession Number: NM_005163	Purification Method: Protein A purification
Size: 100ug , Concentration: 1 mg/ml by Nanodrop;	GeneID (NCBI): 207	CloneNo.: 252456B2
Source: Rabbit	UNIPROT ID: P31749	
Isotype: IgG	Full Name: v-akt murine thymoma viral oncogene homolog 1	
	Calculated MW: 56 kDa	
	Observed MW: 60 kDa	

Applications

Tested Applications:
WB, Indirect ELISA

Species Specificity:
human

Background Information

The serine-threonine protein kinase AKT1 is catalytically inactive in serum-starved primary and immortalized fibroblasts. Phospho-AKT (Thr450) is recognized as the phosphorylation site on AKT (protein kinase B) at the threonine 450 residue. This site is referred to as the turn phosphorylation site and was previously thought to be a result of autophosphorylation, but more recent work has shown that its phosphorylation is controlled by TORC2 activity. This phosphorylation site is important in other AGC kinases, but the role in AKT signaling had not been determined. (PMID: 21670491)

Storage

Storage:
Store at -80°C.

Storage Buffer:
PBS only, pH7.3

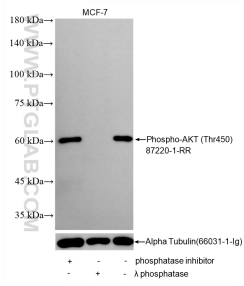
For technical support and original validation data for this product please contact:

T: 1 (888) 4PTGLAB (1-888-478-4522) (toll free in USA), or 1(312) 455-8498 (outside USA)

E: proteintech@ptglab.com
W: ptglab.com

This product is exclusively available under Proteintech Group brand and is not available to purchase from any other manufacturer.

Selected Validation Data



Non-treated MCF-7 cells, phosphatase inhibitor treated MCF-7 cells and λ phosphatase treated MCF-7 cells were subjected to SDS PAGE followed by western blot with 87220-1-RR (Phospho-AKT (Thr450) antibody) at dilution of 1:2000 incubated at room temperature for 1.5 hours. The membrane was stripped and re-blotted with Alpha Tubulin (66031-1-Ig) antibody as a loading control. This data was developed using the same antibody clone with 87220-1-

