

For Research Use Only

STAT5B Recombinant monoclonal antibody, PBS Only (Capture)

Catalog Number: 87224-2-PBS



Basic Information

Catalog Number: 87224-2-PBS	GenBank Accession Number: BC065227	Purification Method: Protein A purification
Size: 100ug, Concentration: 1 mg/ml by Nanodrop;	GeneID (NCBI): 6777	CloneNo.: 252436G2
Source: Rabbit	ENSEMBL Gene ID: ENSG00000173757	
Isotype: IgG	UNIPROT ID: P51692	
	Full Name: signal transducer and activator of transcription 5B	
	Calculated MW: 90 kDa	
	Observed MW: 90 kDa	

Applications

Tested Applications:
WB, IF/ICC, Cytometric bead array, Indirect ELISA

Species Specificity:
human, mouse, rat

Product Information

87224-2-PBS targets STAT5B as part of a matched antibody pair:

MP02926-1: 87224-2-PBS capture and 87224-1-PBS detection (validated in Cytometric bead array)

Unconjugated rabbit recombinant monoclonal antibody in PBS only (BSA and azide free) storage buffer at a concentration of 1 mg/mL, ready for conjugation. Created using Proteintech's proprietary in-house recombinant technology. Recombinant production enables unrivalled batch-to-batch consistency, easy scale-up, and future security of supply.

This conjugation ready format makes antibodies ideal for use in many applications including: ELISAs, multiplex assays requiring matched pairs, mass cytometry, and multiplex imaging applications. Antibody use should be optimized by the end user for each application and assay.

Background Information

STAT5B belongs to the transcription factor STAT family. In response to cytokines and growth factors, STAT family members are phosphorylated by the receptor associated kinases, and then form homo- or heterodimers that translocate to the cell nucleus where they act as transcription activators. STAT5B carries out a dual function: signal transduction and activation of transcription. STAT5B mediates the signal transduction triggered by various cell ligands, such as IL2, IL4, CSF1, and different growth hormones. It has been shown to be involved in diverse biological processes, such as TCR signaling, apoptosis, adult mammary gland development, and sexual dimorphism of liver gene expression.

Storage

Storage:
Store at -80°C.

Storage Buffer:
PBS only, pH7.3

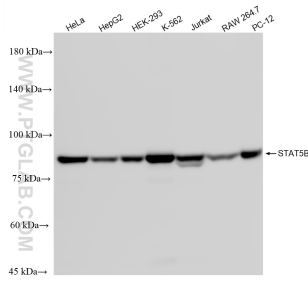
For technical support and original validation data for this product please contact:

T: 1 (888) 4PTGLAB (1-888-478-4522) (toll free in USA), or 1(312) 455-8498 (outside USA)

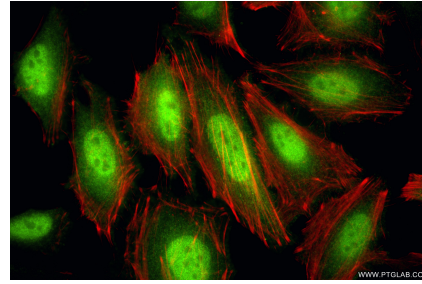
E: proteintech@ptglab.com
W: ptglab.com

This product is exclusively available under Proteintech Group brand and is not available to purchase from any other manufacturer.

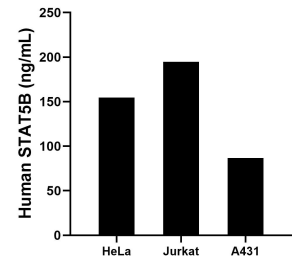
Selected Validation Data



Various lysates were subjected to SDS PAGE followed by western blot with 87224-2-RR (STAT5B antibody) at dilution of 1:10000 incubated at room temperature for 1.5 hours. This data was developed using the same antibody clone with 87224-2-PBS in a different storage buffer formulation.



Immunofluorescent analysis of (4% PFA) fixed HeLa cells using STAT5B antibody (87224-2-RR, Clone: 252436G2) at dilution of 1:400 and CoraLite® 488-Conjugated Goat Anti-Rabbit IgG(H+L) (SA00013-2), CL594-Phalloidin (red). This data was developed using the same antibody clone with 87224-2-PBS in a different storage buffer formulation.



The mean STAT5B concentration was determined to be 154.7 ng/mL in HeLa cell extract based on a 1.2 mg/mL extract load, 194.7 ng/mL in Jurkat cell extract based on a 1.2 mg/mL extract load, 86.8 ng/mL in A431 cell extract based on a 1.2 mg/mL extract load.



Cytometric bead array standard curve of MP02926-1, STAT5B Recombinant Matched Antibody Pair, PBS Only. Capture antibody: 87224-2-PBS. Detection antibody: 87224-1-PBS. Standard: 1928-46/80. Range: 19.53-5000 pg/mL.