

For Research Use Only

SLC6A20 Recombinant monoclonal antibody

Catalog Number:87227-1-RR



Basic Information

Catalog Number: 87227-1-RR	GenBank Accession Number: BC136431	Purification Method: Protein A purification
Size: 100ul , Concentration: 1000 µg/ml by Nanodrop;	GeneID (NCBI): 54716	CloneNo.: 252429A8
Source: Rabbit	UNIPROT ID: Q9NP91	Recommended Dilutions: WB: 1:2000-1:10000
Isotype: IgG	Full Name: solute carrier family 6 (proline IMINO transporter), member 20	
Immunogen Catalog Number: AG33967	Observed MW: 65 kDa	

Applications

Tested Applications: WB, ELISA	Positive Controls: WB : HEK-293 cells,
Species Specificity: human	

Background Information

SLC6A20 also known as XT3, SIT1, belongs to the family of solute carrier 6, mediating the transport of neutral amino acids from the extracellular milieu toward cell or storage vesicles utilizing an electric membrane potential as the driving force. SLC6A20 is expressed in the kidney and small intestine and is localized in the brush marginal membrane of the proximal renal tubules (PMID: 16174864). Mutations in SLC6A20 are associated with Hyperglycinuria and Iminoglycinuria (PMID: 19033659)

Storage

Storage:
Store at -20°C. Stable for one year after shipment.
Storage Buffer:
PBS with 0.02% sodium azide and 50% glycerol, pH7.3
Aliquoting is unnecessary for -20°C storage

*** 20ul sizes contain 0.1% BSA

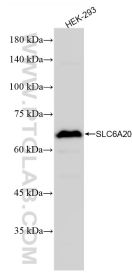
For technical support and original validation data for this product please contact:

T: 1 (888) 4PTGLAB (1-888-478-4522) (toll free in USA), or 1(312) 455-8498 (outside USA)

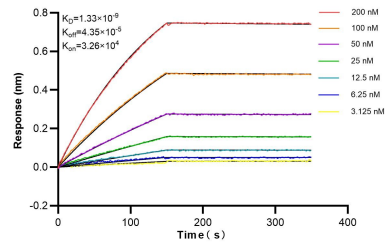
E: proteintech@ptglab.com
W: ptglab.com

This product is exclusively available under Proteintech Group brand and is not available to purchase from any other manufacturer.

Selected Validation Data



HEK-293 cells were subjected to SDS PAGE followed by western blot with 87227-1-RR (SLC6A20 antibody) at dilution of 1:5000 incubated at room temperature for 1.5 hours.



Biolayer interferometry (BLI) kinetic assays of 87227-1-RR against Human SLC6A20 were performed. The affinity constant is 1.33 nM.