

For Research Use Only

PDIA6 Recombinant monoclonal antibody

Catalog Number: 87234-1-RR



Basic Information

Catalog Number: 87234-1-RR	GenBank Accession Number: NM_005742.3	Purification Method: Protein A purification
Size: 100ul , Concentration: 1000 µg/ml by Nanodrop;	GeneID (NCBI): 10130	CloneNo.: 252495E10
Source: Rabbit	UNIPROT ID: Q15084-1	Recommended Dilutions: WB: 1:5000-1:50000 IF/ICC: 1:250-1:1000
Isotype: IgG	Full Name: protein disulfide isomerase family A, member 6	
Immunogen Catalog Number: EG5454	Calculated MW: 48 kDa	
	Observed MW: 54 kDa	

Applications

Tested Applications: WB, IF/ICC, ELISA	Positive Controls:
Species Specificity: human, mouse	WB : HeLa cells, HeLa, HepG2, HEK-293, L02, K-562, NIH-3T3, HSC-T6 cells
	IF/ICC : HeLa cells,

Background Information

PDIA6 (Protein disulfide-isomerase A6) is also named as ERP5, P5, TXNDC7 and belongs to the protein disulfide isomerase family. It is one of the endoplasmic reticulum (ER) resident proteins that catalyze formation, reduction, and isomerization of disulfide bonds in proteins and are thought to play a role in folding of disulfide-bonded proteins (PMID:7590364). It has 2 isoforms produced by alternative splicing. This antibody is specific to PDIA6.

Storage

Storage:
Store at -20°C. Stable for one year after shipment.
Storage Buffer:
PBS with 0.02% sodium azide and 50% glycerol, pH7.3
Aliquoting is unnecessary for -20°C storage

*** 20ul sizes contain 0.1% BSA

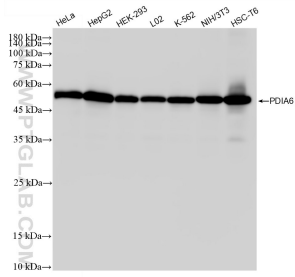
For technical support and original validation data for this product please contact:

T: 1 (888) 4PTGLAB (1-888-478-4522) (toll free in USA), or 1(312) 455-8498 (outside USA)

E: proteintech@ptglab.com
W: ptglab.com

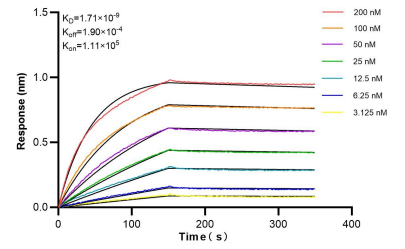
This product is exclusively available under Proteintech Group brand and is not available to purchase from any other manufacturer.

Selected Validation Data



Various lysates were subjected to SDS PAGE followed by western blot with 87234-1-RR (PDIA6 antibody) at dilution of 1:10000 incubated at room temperature for 1.5 hours.

Immunofluorescent analysis of (4% PFA) fixed HeLa cells using PDIA6 antibody (87234-1-RR, Clone: 252495E10) at dilution of 1:500 and Coralite® 488-Conjugated Goat Anti-Rabbit IgG(H+L) (SA00013-2), CL594-Phalloidin (red).



Bilayer interferometry (BLI) kinetic assays of 87234-1-RR against Human PDIA6 were performed. The affinity constant is 1.71 nM.