

For Research Use Only

# MUL1 Recombinant monoclonal antibody

Catalog Number: 87235-1-RR



## Basic Information

<b>Catalog Number:</b> 87235-1-RR	<b>GenBank Accession Number:</b> BC010101	<b>Purification Method:</b> Protein A purification
<b>Size:</b> 100ul , Concentration: 1000 µg/ml by Nanodrop;	<b>GeneID (NCBI):</b> 79594	<b>CloneNo.:</b> 252482F6
<b>Source:</b> Rabbit	<b>UNIPROT ID:</b> Q969V5	<b>Recommended Dilutions:</b> WB: 1:2000-1:10000
<b>Isotype:</b> IgG	<b>Full Name:</b> mitochondrial E3 ubiquitin ligase 1	
<b>Immunogen Catalog Number:</b> AG9119	<b>Calculated MW:</b> 352 aa, 40 kDa	
	<b>Observed MW:</b> 35-41 kDa	

## Applications

<b>Tested Applications:</b> WB, ELISA	<b>Positive Controls:</b> WB : HeLa cells, RAW 264.7 cells, SH-SY5Y cells, J774A.1 cells, PC-12 cells
<b>Species Specificity:</b> human, mouse, rat	

## Background Information

Mitochondrial ubiquitin ligase 1 (MUL1), MAPL, MULAN, or gGIDE, was identified as an E3 protein ligase by three independent groups. Work in mammalian systems shows that MUL1 has small ubiquitin-like modifier (SUMO) ligase activity, stabilizing Drp1, or ubiquitin ligase activity, degrading Mfn. MUL1 expression in mammalian cells results in smaller and more fragmented mitochondria.

## Storage

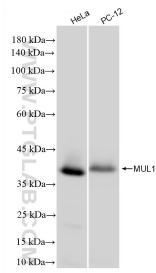
**Storage:**  
Store at -20°C. Stable for one year after shipment.  
**Storage Buffer:**  
PBS with 0.02% sodium azide and 50% glycerol, pH7.3  
Aliquoting is unnecessary for -20°C storage

\*\*\* 20ul sizes contain 0.1% BSA

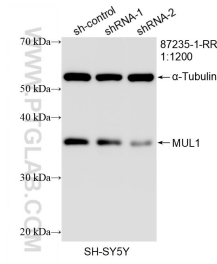
For technical support and original validation data for this product please contact:  
T: 1 (888) 4PTGLAB (1-888-478-4522) (toll free in USA), or 1(312) 455-8498 (outside USA)      E: proteintech@ptglab.com  
W: ptglab.com

This product is exclusively available under Proteintech Group brand and is not available to purchase from any other manufacturer.

## Selected Validation Data



Various lysates were subjected to SDS PAGE followed by western blot with 87235-1-RR (MUL1 antibody) at dilution of 1:5000 incubated at room temperature for 1.5 hours.



WB result of MUL1 antibody (87235-1-RR; 1:1200; incubated at room temperature for 1.5 hours) with sh-Control and sh-MUL1 transfected SH-SY5Y cells.