

For Research Use Only

# PARM1 Recombinant monoclonal antibody, PBS Only

Catalog Number: 87241-3-PBS



## Basic Information

Catalog Number:

87241-3-PBS

Size:

100ug, Concentration: 1 mg/ml by Nanodrop;

Source:

Rabbit

Isotype:

IgG

Immunogen Catalog Number:

EG5806

GenBank Accession Number:

NM\_015393.4

GeneID (NCBI):

25849

UNIPROT ID:

Q6UWI2

Full Name:

DKFZP564O0823 protein

Calculated MW:

32 kDa

Observed MW:

32 kDa, 100 kDa

Purification Method:

Protein A purification

CloneNo.:

252406G12

## Applications

Tested Applications:

WB, Indirect ELISA

Species Specificity:

human, mouse, rat

## Storage

Storage:

Store at -80°C.

Storage Buffer:

PBS only, pH7.3

For technical support and original validation data for this product please contact:

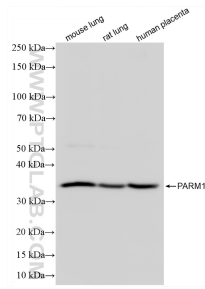
T: 1 (888) 4PTGLAB (1-888-478-4522) (toll free in USA), or 1(312) 455-8498 (outside USA)

E: [proteintech@ptglab.com](mailto:proteintech@ptglab.com)

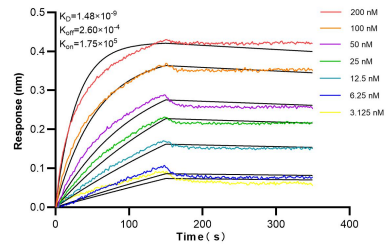
W: [ptglab.com](http://ptglab.com)

This product is exclusively available under Proteintech Group brand and is not available to purchase from any other manufacturer.

## Selected Validation Data



Various lysates were subjected to SDS PAGE followed by western blot with 87241-3-RR (PARM1 antibody) at dilution of 1:3000 incubated at room temperature for 1.5 hours. This data was developed using the same antibody clone with 87241-3-PBS in a different storage buffer formulation.



Biolayer interferometry (BLI) kinetic assays of 87241-3-RR against Human PARM1 were performed. The affinity constant is 1.48 nM.