

For Research Use Only

PARM1 Recombinant monoclonal antibody

Catalog Number:87241-3-RR



Basic Information

Catalog Number:

87241-3-RR

Size:

100ul , Concentration: 1000 µg/ml by Nanodrop;

Source:

Rabbit

Isotype:

IgG

Immunogen Catalog Number:

EG5806

GenBank Accession Number:

NM_015393.4

GeneID (NCBI):

25849

UNIPROT ID:

Q6UWI2

Full Name:

DKFZP564O0823 protein

Calculated MW:

32 kDa

Observed MW:

32 kDa, 100 kDa

Purification Method:

Protein A purification

CloneNo.:

252406G12

Recommended Dilutions:

WB: 1:1000-1:6000

Applications

Tested Applications:

WB, ELISA

Species Specificity:

human, mouse, rat

Positive Controls:

WB : mouse lung tissue, rat lung tissue, human placenta tissue

Storage

Storage:

Store at -20°C. Stable for one year after shipment.

Storage Buffer:

PBS with 0.02% sodium azide and 50% glycerol, pH7.3

Aliquoting is unnecessary for -20°C storage

*** 20ul sizes contain 0.1% BSA

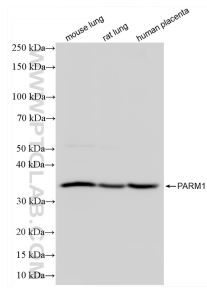
For technical support and original validation data for this product please contact:

T: 1 (888) 4PTGLAB (1-888-478-4522) (toll free in USA), or 1(312) 455-8498 (outside USA)

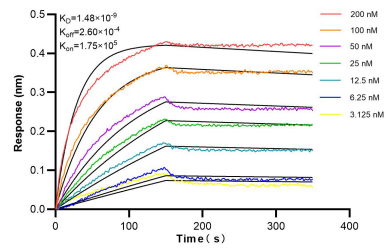
E: proteintech@ptglab.com
W: ptglab.com

This product is exclusively available under Proteintech Group brand and is not available to purchase from any other manufacturer.

Selected Validation Data



Various lysates were subjected to SDS PAGE followed by western blot with 87241-3-RR (PARM1 antibody) at dilution of 1:3000 incubated at room temperature for 1.5 hours.



Biolayer interferometry (BLI) kinetic assays of 87241-3-RR against Human PARM1 were performed. The affinity constant is 1.48 nM.