

For Research Use Only

Mouse Leptin Recombinant monoclonal antibody, PBS Only (Capture)

Catalog Number: 87242-2-PBS



Basic Information

Catalog Number: 87242-2-PBS	GenBank Accession Number: NM_008493.3	Purification Method: Protein A purification
Size: 100ug, Concentration: 1 mg/ml by Nanodrop;	GeneID (NCBI): 16846	CloneNo.: 251280G8
Source: Rabbit	UNIPROT ID: Q544U0	
Isotype: IgG	Full Name: Leptin	
Immunogen Catalog Number: EG4486	Calculated MW: 19KD	

Applications

Tested Applications:
IF/ICC, Cytometric bead array, Sandwich ELISA, Indirect ELISA

Species Specificity:
mouse

Product Information

87242-2-PBS targets Leptin as part of a matched antibody pair:

MP02927-1: 87242-2-PBS capture and 87242-1-PBS detection (validated in Cytometric bead array)

MP02927-2: 87242-2-PBS capture and 87242-3-PBS detection (validated in Sandwich ELISA)

Unconjugated rabbit recombinant monoclonal antibody in PBS only (BSA and azide free) storage buffer at a concentration of 1 mg/mL, ready for conjugation. Created using Proteintech's proprietary in-house recombinant technology. Recombinant production enables unrivalled batch-to-batch consistency, easy scale-up, and future security of supply.

This conjugation ready format makes antibodies ideal for use in many applications including: ELISAs, multiplex assays requiring matched pairs, mass cytometry, and multiplex imaging applications. Antibody use should be optimized by the end user for each application and assay.

Storage

Storage:
Store at -80°C.
Storage Buffer:
PBS only, pH7.3

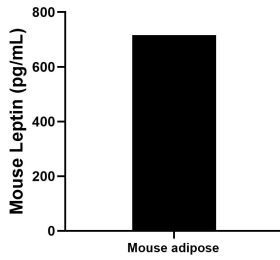
For technical support and original validation data for this product please contact:

T: 1 (888) 4PTGLAB (1-888-478-4522) (toll free in USA), or 1(312) 455-8498 (outside USA)

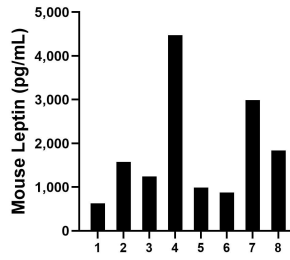
E: proteintech@ptglab.com
W: ptglab.com

This product is exclusively available under Proteintech Group brand and is not available to purchase from any other manufacturer.

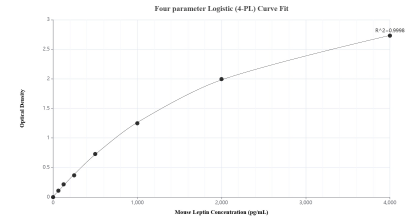
Selected Validation Data



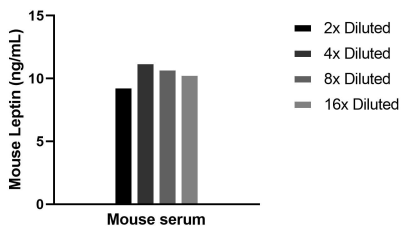
The mean Leptin concentration was determined to be 716.3 pg/mL in mouse adipose tissue extract based on a 1.8 mg/mL extract load.



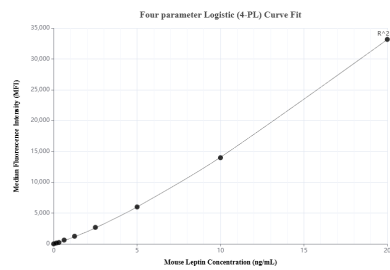
Serum of eight mice was measured. The Leptin concentration of detected samples was determined to be 1,826.5 pg/mL with a range of 626.4-4,475.5 pg/mL.



Sandwich ELISA standard curve of MP02927-2, Mouse Leptin Recombinant Matched Antibody Pair - PBS only. 87242-2-PBS was coated to a plate as the capture antibody and incubated with serial dilutions of standard Eg4486. 87242-3-PBS was HRP conjugated as the detection antibody. Range: 62.5-4000 pg/mL.



The mean Leptin concentration was determined to be 10.3 ng/mL in mouse serum.



Cytometric bead array standard curve of MP02927-1, MOUSE Leptin Recombinant Matched Antibody Pair, PBS Only. Capture antibody: 87242-2-PBS. Detection antibody: 87242-1-PBS. Standard: Eg4486. Range: 0.156-20 ng/mL.