

For Research Use Only

# LIPC Recombinant monoclonal antibody

Catalog Number: 87243-1-RR



## Basic Information

<b>Catalog Number:</b> 87243-1-RR	<b>GenBank Accession Number:</b> BC146659	<b>Purification Method:</b> Protein A purification
<b>Size:</b> 100ul , Concentration: 1000 µg/ml by Nanodrop;	<b>GeneID (NCBI):</b> 3990	<b>CloneNo.:</b> 251015D5
<b>Source:</b> Rabbit	<b>UNIPROT ID:</b> P11150	<b>Recommended Dilutions:</b> WB: 1:1000-1:4000
<b>Isotype:</b> IgG	<b>Full Name:</b> lipase, hepatic	
<b>Immunogen Catalog Number:</b> AG15538	<b>Calculated MW:</b> 499 aa, 56 kDa	
	<b>Observed MW:</b> 65 kDa	

## Applications

<b>Tested Applications:</b> WB, ELISA	<b>Positive Controls:</b> WB : mouse liver tissue, HepG2 cells, HuH-7 cells, rat liver tissue, mouse heart tissue
<b>Species Specificity:</b> human, mouse, rat	

## Background Information

LIPC, also named as HTGL and HL, belongs to the AB hydrolase superfamily and Lipase family. It has the capacity to catalyze hydrolysis of phospholipids, mono-, di-, and triglycerides, and acyl-CoA thioesters. LIPC is an important enzyme in HDL metabolism. It binds heparin.

## Storage

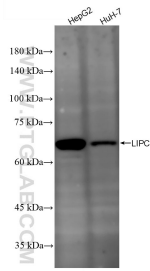
**Storage:**  
Store at -20°C. Stable for one year after shipment.  
**Storage Buffer:**  
PBS with 0.02% sodium azide and 50% glycerol, pH7.3  
Aliquoting is unnecessary for -20°C storage

\*\*\* 20ul sizes contain 0.1% BSA

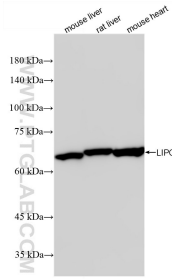
For technical support and original validation data for this product please contact:  
T: 1 (888) 4PTGLAB (1-888-478-4522) (toll free in USA), or 1(312) 455-8498 (outside USA)  
E: proteintech@ptglab.com  
W: ptglab.com

This product is exclusively available under Proteintech Group brand and is not available to purchase from any other manufacturer.

## Selected Validation Data



Various lysates were subjected to SDS PAGE followed by western blot with 87243-1-RR (LIPC antibody) at dilution of 1:2000 incubated at room temperature for 1.5 hours.



Various lysates were subjected to SDS PAGE followed by western blot with 87243-1-RR (LIPC antibody) at dilution of 1:2000 incubated at room temperature for 1.5 hours.