

For Research Use Only

HSD11B2 Recombinant monoclonal antibody, PBS Only

Catalog Number: 87244-1-PBS



Basic Information

Catalog Number: 87244-1-PBS	GenBank Accession Number: BC036780	Purification Method: Protein A purification
Size: 100ug, Concentration: 1 mg/ml by Nanodrop;	GeneID (NCBI): 3291	CloneNo.: 250591F12
Source: Rabbit	UNIPROT ID: P80365	
Isotype: IgG	Full Name: hydroxysteroid (11-beta) dehydrogenase 2	
Immunogen Catalog Number: AG5146	Calculated MW: 405 aa, 44 kDa	
	Observed MW: 40-43 kDa	

Applications

Tested Applications:
WB, Indirect ELISA

Species Specificity:
human, mouse, rat

Background Information

The HSD11B2 gene encodes the type II isoform of 11-beta-hydroxysteroid dehydrogenase, a microsomal enzyme complex responsible for the interconversion of biologically active cortisol and inactive cortisone. This protein catalyzes the cortisol-to-cortisone reaction. This protein expresses approximately 44 kDa in placenta, trophoblast, and distal colon, but in kidney tissue, there are two bands of approximately 44 and 48 kDa can be consistently observed and no signal is seen in decidua, adrenal, or liver (PMID:9048640).

Storage

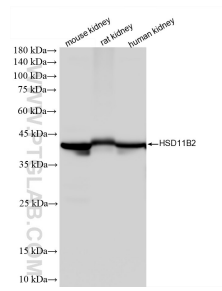
Storage:
Store at -80°C.

Storage Buffer:
PBS only, pH7.3

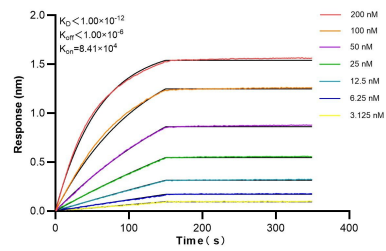
For technical support and original validation data for this product please contact:
T: 1 (888) 4PTGLAB (1-888-478-4522) (toll free in USA), or 1(312) 455-8498 (outside USA) E: proteintech@ptglab.com
W: ptglab.com

This product is exclusively available under Proteintech Group brand and is not available to purchase from any other manufacturer.

Selected Validation Data



Various lysates were subjected to SDS PAGE followed by western blot with 87244-1-RR (HSD11B2 antibody) at dilution of 1:10000 incubated at room temperature for 1.5 hours. This data was developed using the same antibody clone with 87244-1-PBS in a different storage buffer formulation.



Biolayer interferometry (BLI) kinetic assays of 87244-1-RR against Human HSD11B2 were performed. The affinity constant is below 1 pM.