

For Research Use Only

# TEM1/CD248 Recombinant monoclonal antibody, PBS Only

Catalog Number: 87247-1-PBS



## Basic Information

<b>Catalog Number:</b> 87247-1-PBS	<b>GenBank Accession Number:</b> BC051340	<b>Purification Method:</b> Protein A purification
<b>Size:</b> 100ug, Concentration: 1 mg/ml by Nanodrop;	<b>GeneID (NCBI):</b> 57124	<b>CloneNo.:</b> 251338A5
<b>Source:</b> Rabbit	<b>UNIPROT ID:</b> Q9HCU0	
<b>Isotype:</b> IgG	<b>Full Name:</b> CD248 molecule, endosialin	
<b>Immunogen Catalog Number:</b> EG4427	<b>Calculated MW:</b> 757 aa, 81 kDa	
	<b>Observed MW:</b> 100 kDa	

## Applications

**Tested Applications:**  
WB, IF-P, Indirect ELISA

**Species Specificity:**  
human, mouse

## Background Information

TEM1 (Tumor endothelial marker 1), also named as CD248, Endosialin and CD164L1, is a C-type lectin-like domain (CTLD) containing type I transmembrane glycoprotein. It is now considered to be a highly selective marker for activated perivascular and stromal cells, detected in most cancers and at least some inflammatory disorders. CD248 plays a role in tumor angiogenesis. It is a potential diagnostic tool and therapeutic target of inflammatory and malignant diseases. Two isoforms of human TEM1 exist. The calculated molecular weights of the two isoforms are 81 kDa and 46 kDa, respectively. Native TEM1 can be glycosylated, and the glycosylated form has a larger apparent molecular weight than 81 kDa.

## Storage

**Storage:**  
Store at -80°C.

**Storage Buffer:**  
PBS only, pH7.3

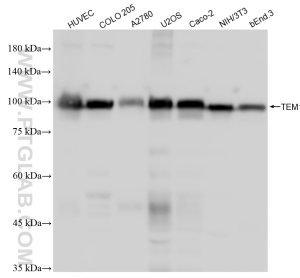
For technical support and original validation data for this product please contact:

T: 1 (888) 4PTGLAB (1-888-478-4522) (toll free in USA), or 1(312) 455-8498 (outside USA)

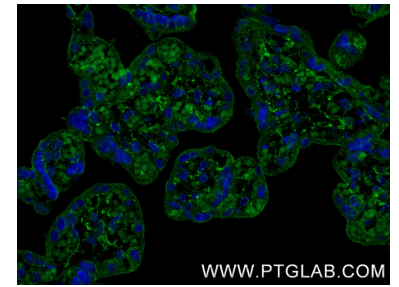
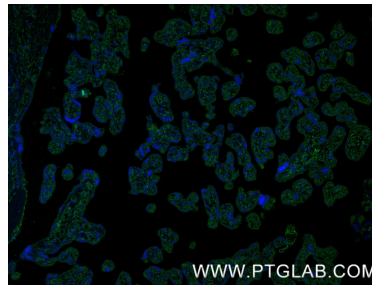
E: [proteintech@ptglab.com](mailto:proteintech@ptglab.com)  
W: [ptglab.com](http://ptglab.com)

**This product is exclusively available under Proteintech Group brand and is not available to purchase from any other manufacturer.**

## Selected Validation Data



Various lysates were subjected to SDS PAGE followed by western blot with 87247-1-RR (CD248 antibody) at dilution of 1:10000 incubated at room temperature for 1.5 hours. This data was developed using the same antibody clone with 87247-1-PBS in a different storage buffer formulation.



Immunofluorescent analysis of (4% PFA) fixed paraffin-embedded human placenta tissue using TEM1 antibody (87247-1-RR, Clone: 251338A5) at dilution of 1:200 and CoraLite@488-Conjugated Goat Anti-Rabbit IgG(H+L) (SA00013-2). Heat mediated antigen retrieval with Tris-EDTA buffer (pH 9.0). This data was developed using the same antibody clone with 87247-1-PBS in a different storage buffer formulation.