

For Research Use Only

TEM1/CD248 Recombinant monoclonal antibody

Catalog Number: 87247-1-RR



Basic Information

Catalog Number: 87247-1-RR	GenBank Accession Number: BC051340	Purification Method: Protein A purification
Size: 100ul , Concentration: 1000 µg/ml by Nanodrop;	GeneID (NCBI): 57124	CloneNo.: 251338A5
Source: Rabbit	UNIPROT ID: Q9HCU0	Recommended Dilutions: WB: 1:5000-1:50000 IF-P: 1:50-1:500
Isotype: IgG	Full Name: CD248 molecule, endosialin	
Immunogen Catalog Number: EG4427	Calculated MW: 757 aa, 81 kDa	
	Observed MW: 100 kDa	

Applications

Tested Applications:
WB, IF-P, ELISA

Species Specificity:
human, mouse

Positive Controls:

WB : HUVEC cells, COLO 205 cells, A2780 cells, U2OS cells, Caco-2 cells, NIH/3T3 cells, bEnd.3 cells

IF-P : human placenta tissue,

Background Information

TEM1 (Tumor endothelial marker 1), also named as CD248, Endosialin and CD164L1, is a C-type lectin-like domain (CTLD) containing type I transmembrane glycoprotein. It is now considered to be a highly selective marker for activated perivascular and stromal cells, detected in most cancers and at least some inflammatory disorders. CD248 plays a role in tumor angiogenesis. It is a potential diagnostic tool and therapeutic target of inflammatory and malignant diseases. Two isoforms of human TEM1 exist. The calculated molecular weights of the two isoforms are 81 kDa and 46 kDa, respectively. Native TEM1 can be glycosylated, and the glycosylated form has a larger apparent molecular weight than 81 kDa.

Storage

Storage:

Store at -20°C. Stable for one year after shipment.

Storage Buffer:

PBS with 0.02% sodium azide and 50% glycerol, pH7.3

Aliquoting is unnecessary for -20°C storage

*** 20ul sizes contain 0.1% BSA

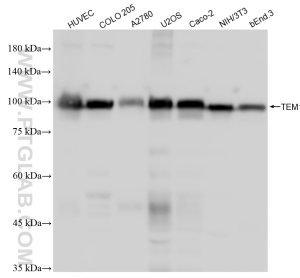
For technical support and original validation data for this product please contact:

T: 1 (888) 4PTGLAB (1-888-478-4522) (toll free in USA), or 1(312) 455-8498 (outside USA)

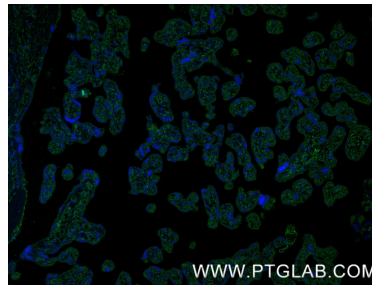
E: proteintech@ptglab.com
W: ptglab.com

This product is exclusively available under Proteintech Group brand and is not available to purchase from any other manufacturer.

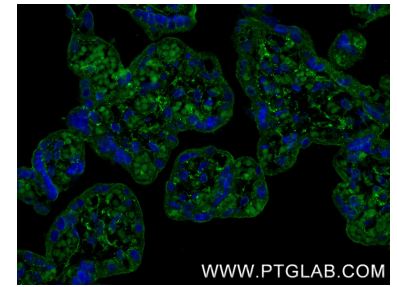
Selected Validation Data



Various lysates were subjected to SDS PAGE followed by western blot with 87247-1-RR (CD248 antibody) at dilution of 1:10000 incubated at room temperature for 1.5 hours.



Immunofluorescent analysis of (4% PFA) fixed paraffin-embedded human placenta tissue using TEM1 antibody (87247-1-RR, Clone: 251338A5) at dilution of 1:200 and CoraLite@488-Conjugated Goat Anti-Rabbit IgG(H+L) (SA00013-2). Heat mediated antigen retrieval with Tris-EDTA buffer (pH 9.0).



Immunofluorescent analysis of (4% PFA) fixed paraffin-embedded human placenta tissue using TEM1 antibody (87247-1-RR, Clone: 251338A5) at dilution of 1:200 and CoraLite@488-Conjugated Goat Anti-Rabbit IgG(H+L) (SA00013-2). Heat mediated antigen retrieval with Tris-EDTA buffer (pH 9.0).