

For Research Use Only

GAS6 Recombinant monoclonal antibody, PBS Only (Capture)

Catalog Number: 87249-3-PBS



Basic Information

Catalog Number: 87249-3-PBS	GenBank Accession Number: NM_000820.3	Purification Method: Protein A purification
Size: 100ug , Concentration: 1 mg/ml by Nanodrop;	GeneID (NCBI): 2621	CloneNo.: 252407C10
Source: Rabbit	UNIPROT ID: Q14393-2	
Isotype: IgG	Full Name: growth arrest-specific 6	
Immunogen Catalog Number: EG4871	Calculated MW: 75 kDa	

Applications

Tested Applications:
Sandwich ELISA, Indirect ELISA

Species Specificity:
human

Product Information

87249-3-PBS targets GAS6 as part of a matched antibody pair:

MP03067-1: 87249-3-PBS capture and 87249-2-PBS detection (validated in Sandwich ELISA)

Unconjugated rabbit recombinant monoclonal antibody in PBS only (BSA and azide free) storage buffer at a concentration of 1 mg/mL, ready for conjugation. Created using Proteintech's proprietary in-house recombinant technology. Recombinant production enables unrivalled batch-to-batch consistency, easy scale-up, and future security of supply.

This conjugation ready format makes antibodies ideal for use in many applications including: ELISAs, multiplex assays requiring matched pairs, mass cytometry, and multiplex imaging applications. Antibody use should be optimized by the end user for each application and assay.

Storage

Storage:
Store at -80°C.

Storage Buffer:
PBS only, pH7.3

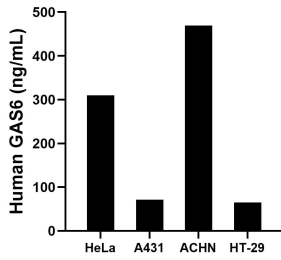
For technical support and original validation data for this product please contact:

T: 1 (888) 4PTGLAB (1-888-478-4522) (toll free in USA), or 1(312) 455-8498 (outside USA)

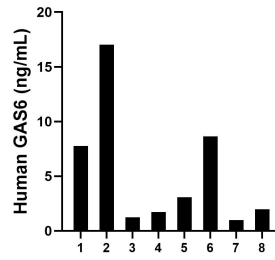
E: proteintech@ptglab.com
W: ptglab.com

This product is exclusively available under Proteintech Group brand and is not available to purchase from any other manufacturer.

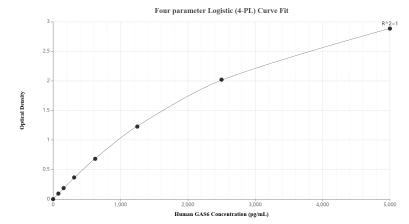
Selected Validation Data



The mean GAS6 concentration was determined to be 310.0 ng/mL in HeLa cell extract based on a 1.2 mg/mL extract load, 71.3 ng/mL in A431 cell extract based on a 1.2 mg/mL extract load, 469.1 ng/mL in ACHN cell extract based on a 1.2 mg/mL extract load and 65.3 ng/mL in HT-29 cell extract based on a 1.1 mg/mL extract load.



Plasma of eight individual healthy human donors was measured. The GAS6 concentration of detected samples was determined to be 6.6 ng/mL with a range of 1.3-17.0 ng/mL.



Sandwich ELISA standard curve of MP03067-1, Human GAS6 Recombinant Matched Antibody Pair - PBS only. 87249-3-PBS was coated to a plate as the capture antibody and incubated with serial dilutions of standard Eg4871. 87249-2-PBS was HRP conjugated as the detection antibody. Range: 78.1-5000 pg/mL.